

(18) (9)  
Page 1

# MODIS

## Science Data Support Team Presentation

-BY-

Ed Masuoka  
emasuoka@ltpsun.gsfc.nasa.gov  
and  
Al Fleig  
afleig@ltpsun.gsfc.nasa.gov

### MODIS Science Team Meeting at GSFC

9/30/93

(18) + (9)  
Masuoka + Fleig  
7

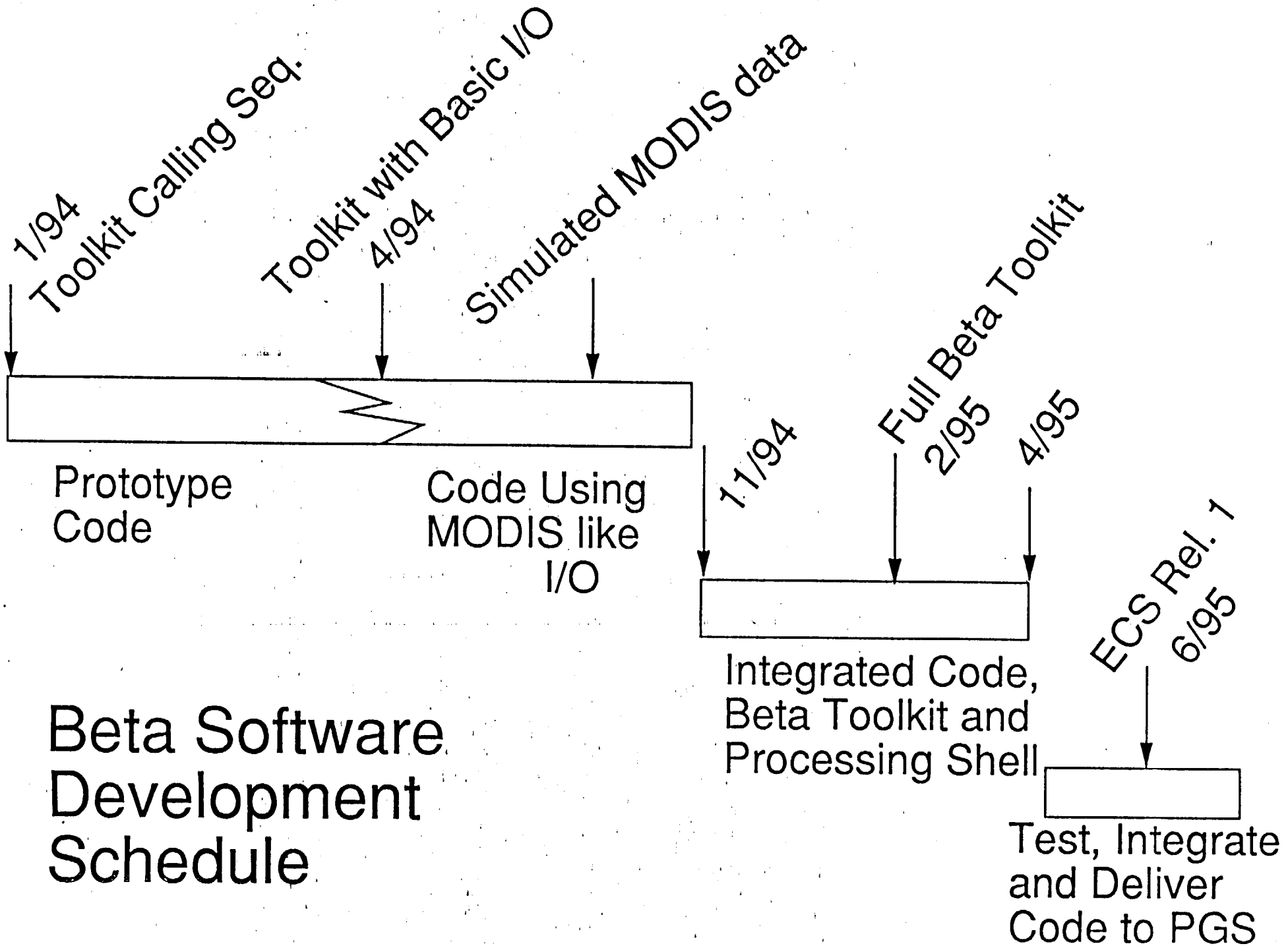
# Topics

- Beta Software Delivery 1/94
- Prototyping
- Information Needed

# Beta Software Development

## Objectives

- Learn/Teach
- Discover
- Initiate Interaction

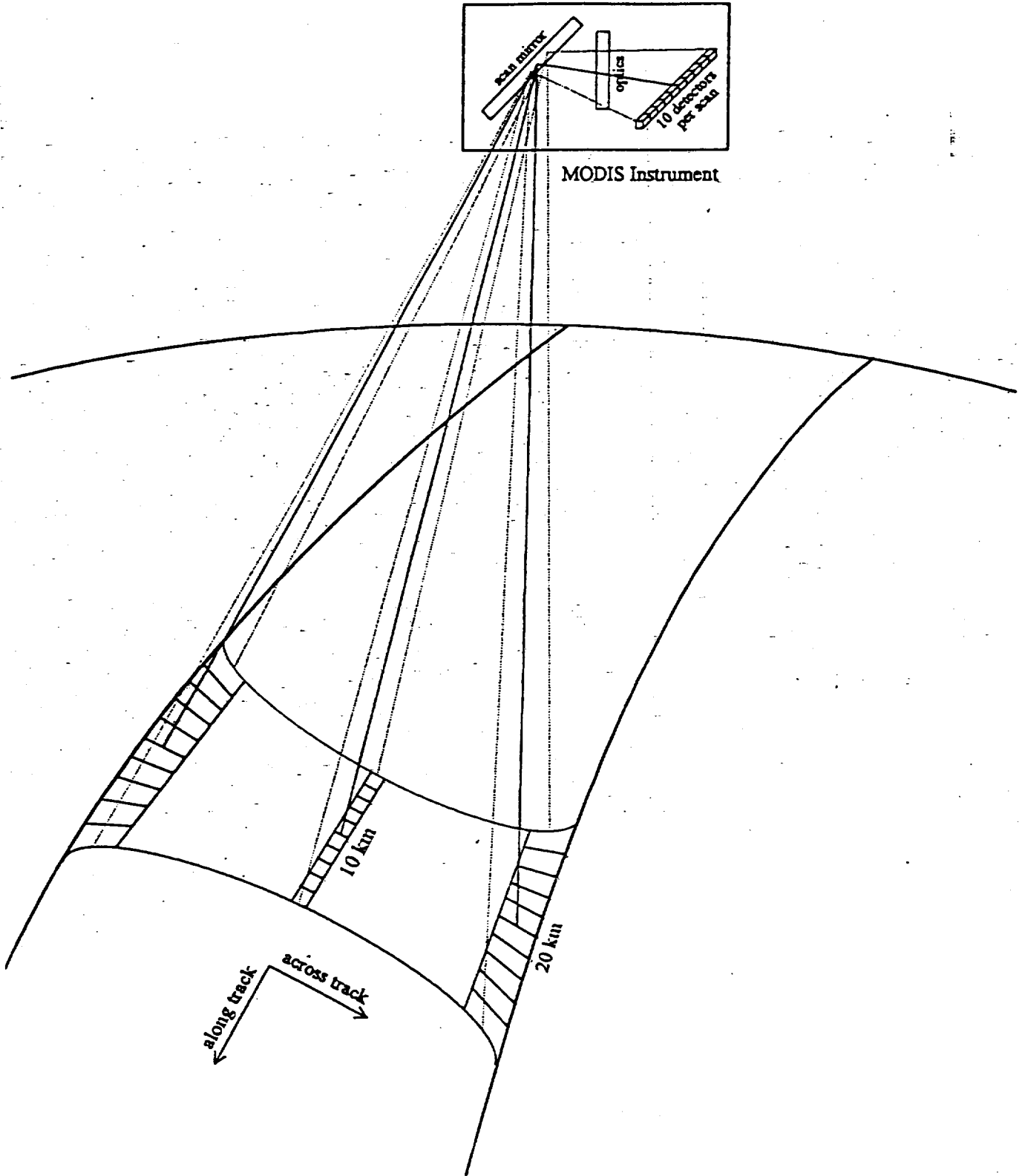


# Beta Software Development Schedule

# Prototyping

- MODIS Scan Geometry
- MAS Processing Status
- Global AVHRR data processing
- Geolocation

# MODIS Scanning Geometry



## Information/Reviews

- Ancillary Data Products
- SPDB entries
- MODIS Documents
- Focus Teams

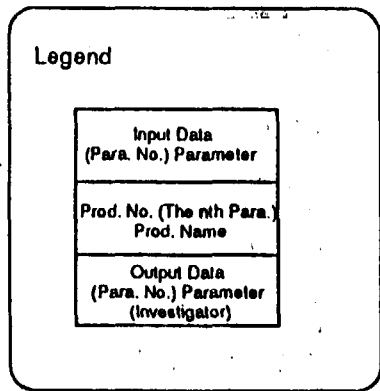
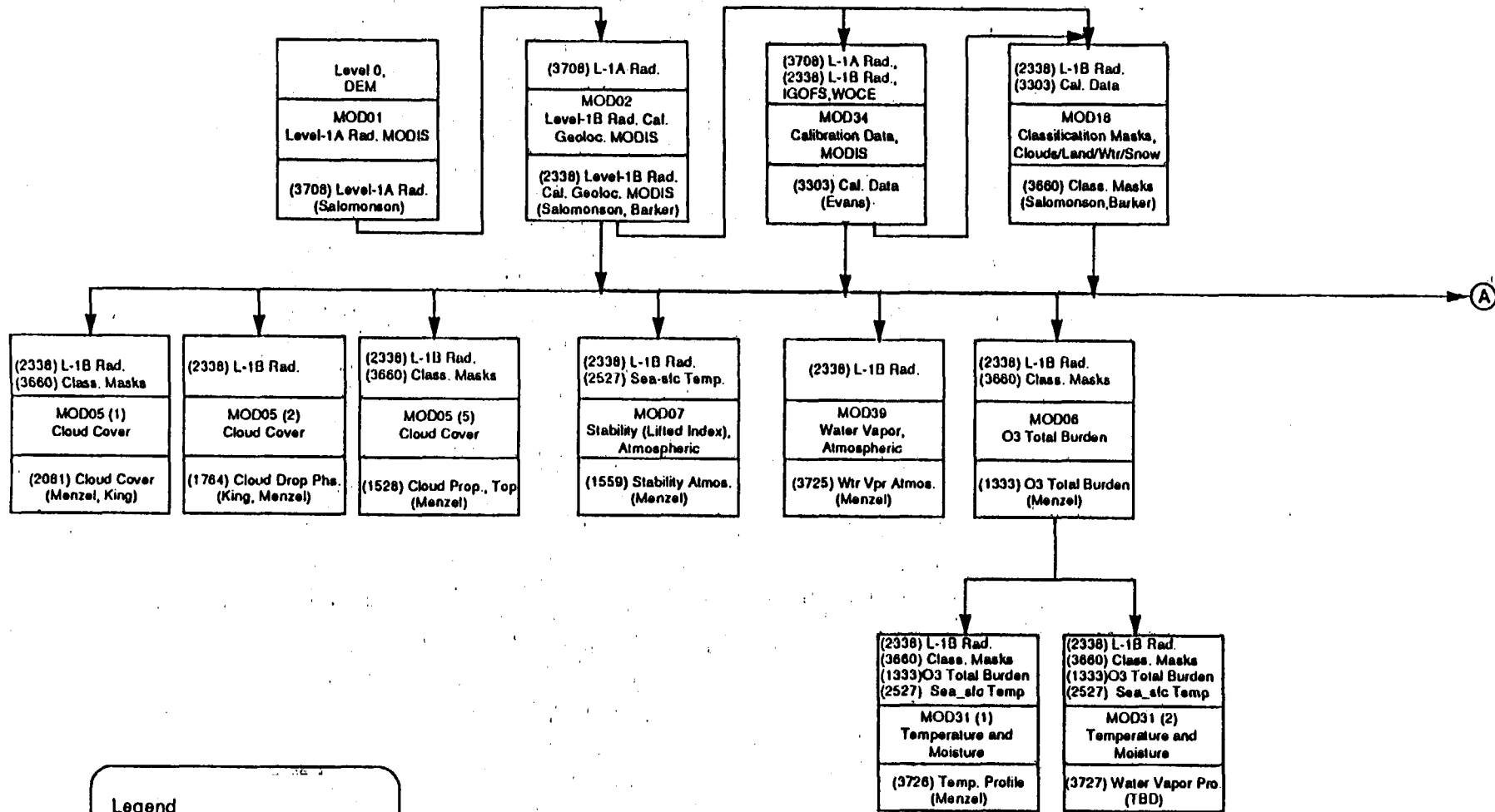
# Network Communications Requirements for Data Validation and Quality Checks

Prod #	Product Name	Parameter Name	Parm #	Investigator	DAAC to SCF Data Transmission Requirements	Total Volume (GB/day)
MOD04	Aerosol Product	Aerosol Optical Depth, Spectral	2293	Kaufman, Taine	Network QC 1.02 GB/day (0.012 MB/sec)	
		Aerosol Size-distribution (Radius-Dispersion)	1022	Taine, Kaufman	Network QC 3.54 GB/day (0.041 MB/sec)	
		<i>Product Total</i>				
MOD05	Precipitable Water	Precipitable Water, Near IR	1874	Kaufman, Taine, Menzel	Network QC 1.2 GB/day (0.013 MB/sec)	
		<i>Product Total</i>				
MOD06	Cloud Product	Cloud Cover	2081	Menzel, King	Network QC	
		Cloud Particle Phase	1764	King, Menzel		
		Cloud Particle Size(Effective Radius)	1780	King		
		Cloud Optical Depth	2311	King		
		Cloud Properties, Top	1528	Menzel	Network QC 2.4 GB/day (0.027 MB/sec)	
		FDD (Spare)	N/A			
<i>Product Total</i>					2.40	
MOD07	O3 Total Burden	O3 Total Burden	1333	Menzel	Network QC 1.2 GB/day (0.014 MB/sec)	
		<i>Product Total</i>				
MOD08	Stability (Lifted Index), Atmospheric	Stability (Lifted Index), Atmospheric	1559	Menzel	Network QC 1.2 GB/day (0.014 MB/sec)	
		<i>Product Total</i>				
MOD09	Surface Reflectance	Surface Leaving Radiance	2015	Kaufman, Taine, Justice	Network QC 5.16 GB/day (0.060 MB/sec)	
		Bidirectional Reflectance (Without Topography)	3669	Muller, Strahler	Network QC 18.06 GB/day (0.209 MB/sec)	
		Bidirectional Reflectance (With Topography)	4332	Muller, Strahler	Network QC 18.06 GB/day (0.209 MB/sec)	
		Albedo, Spectral, Land_sfc (Without Topography)	3665	Muller, Strahler	Network QC 2.04 GB/day (0.024 MB/sec)	
		Albedo, Spectral, Land_sfc (With Topography)	4333	Muller, Strahler	Network QC 2.04 GB/day (0.024 MB/sec)	
		<i>Product Total</i>				
MOD10	Snow Cover	Snow Cover	3020	Salomonson, Hall	Network QC 3.81 GB/day (0.044 MB/sec)	
		<i>Product Total</i>				
MOD11	Land_sfc Temperature/Emissivity	Land_sfc Temperature	2484	Wan	Network QC 7.86 GB/day (0.071 MB/sec)	
		Land_sfc Emissivity	3323	Wan	Restored old parameter # 3323. Network QC 0.15	
		<i>Product Total</i>				

Note: All information is based on TMS' response to the July 1991 survey



# MODIS Level 2 Atmosphere and Land Data Products 1 (DRAFT)



Note: (1) Parameter 2527 is Oceans Data Product  
 (2) Parameter 2669 is Level 3 Data Product

# Documents to Review

## MODIS

ATBDs\*

SCF Plan\*

Software/Data Management Plan\*

MODIS Ops Concept for PGS

Prototyping Plans

## EOSDIS

PGS Toolkit Spec (10/11)

ECS SRR (9/24)

\*=input required from Science Team