

Delivery Status

Process	Description	Status	Comments
MOD_PR04_05	Aerosol/Water Vapor	at DAAC	Operator Actions Aerosol Correction
MOD_PR06CT	Cloud Top Properties	SDST Test	
MOD_PR06OD	Cloud Optical Depth	SDST Integration	Operator Actions
MOD_PR06CD	Cirrus Detection	SDST Test	
MOD_PR07	Profiles	at DAAC	
MOD_PR08T	L3 Tiling	SDST Test	Operator Actions Test Waiting for PGE06 Inputs
MOD_PR08D	L3 Daily	SDST Integration	Operator Actions
MOD_PR08M	L3 Monthly	SDST Integration	Operator Actions
MOD_PR35	Cloud Mask	at DAAC	Clear Sky Radiances

Storage Volume Requirement (GB/day)

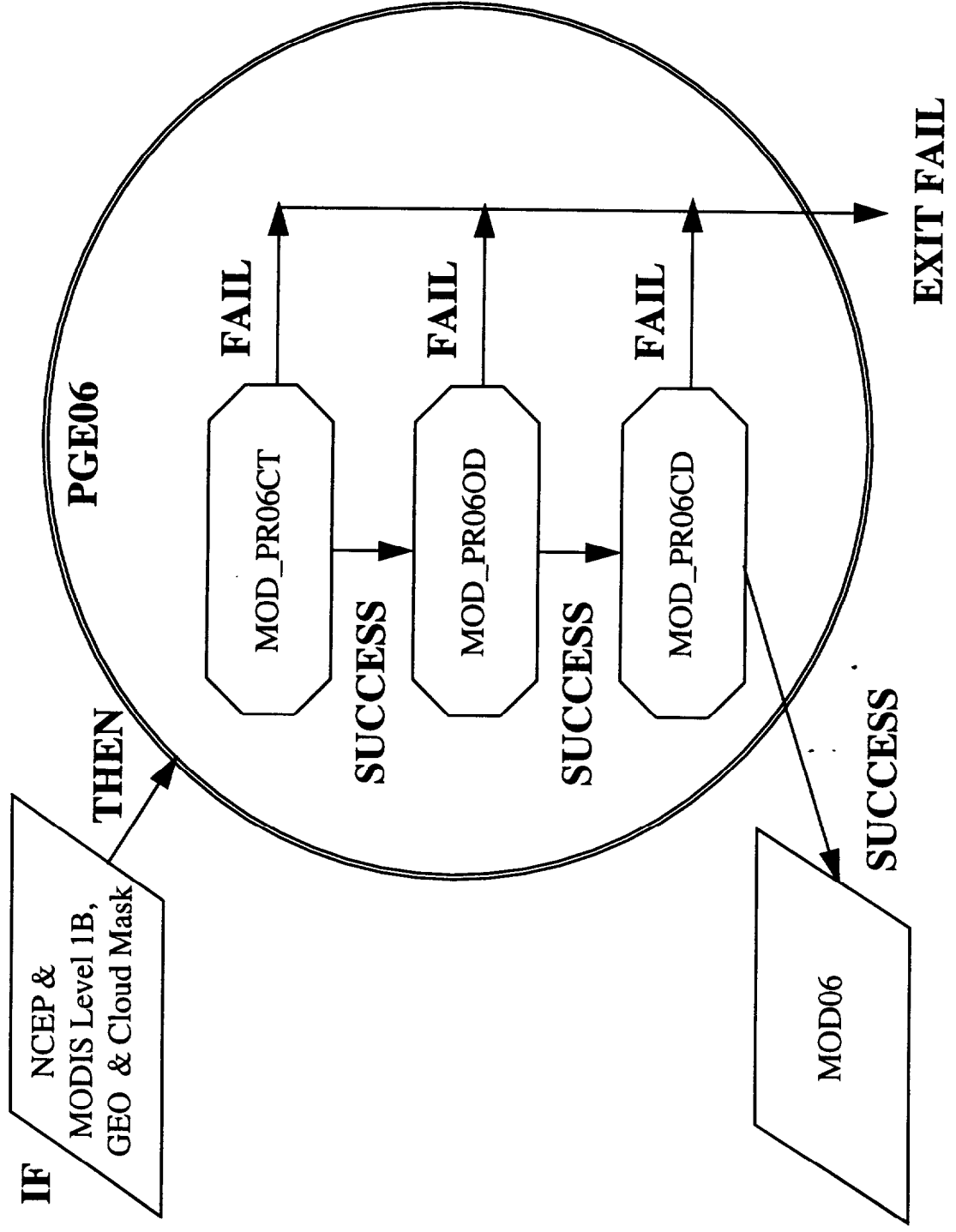
Product Id	Description	ECS Baseline (2/96)	V1 (5/97)	V2
MOD04	Aerosol	1.1	1.8	1.5
MOD05	Water Vapor	11.1	1.6	2.6
MOD06	Cloud Product	8.9	5.0	11.0
MOD07	Profiles	7.5	6.0	8.1
MOD08_D	L3 Daily	< 0.1	N/A	0.4
MOD08_M	L3 Monthly	N/A	N/A	< 0.1
MOD35	Cloud Mask	3.2	4.8	13.7
TOTALS		31.8	19.2	37.3

CPU Performance Estimates (MFLOPS)

Product ID	Description	ECS Baseline (2/96)	V1 (5/97)	V2*
MOD_PR04_05	Aerosol/Water Vapor	4	207	77
MOD_PR06	Cloud Product	416	580	907
MOD_PR07	Profiles	172	112	55
MOD_PR08T	L3 Zonal Tiling	N/A	112	102
MOD_PR08D	L3 Daily	1	N/A	2
MOD_PR08M	L3 Monthly	N/A	N/A	1
MOD_PR35	Cloud Mask	61	930	490
TOTALS		654	1836	1634

* Factor of 1.6 removed

Product Rules PGE06



DAAC Hand-off/Code Updates

- GSFC DAAC will process L1 and PGE03
- SCF code delivery interface is SDST
- Procedure for integrating code updates not yet completely defined