

A wireframe globe is positioned in the top-left corner of the slide. The globe is composed of a grid of lines forming a sphere, with a central point. The background of the slide is a light green color with a subtle pattern of curved lines and a large, faint, light-colored rectangular shape in the center.

MODAPS Production, Archive, and Distribution

MODIS Science Team Meeting
November 2, 2006

Ed Masuoka and Mike Teague



MODAPS and LAADS

- ★ 7x24 production
- ★ 10 FTEs (5 operation/science test, 5 sustaining engineering)
- ★ Added 4 for distribution/user support
 - ★ L0 and ancillary ingest - Derrick Jones
 - ★ Distribution - Curt Hoffman
 - ★ Tier 1 User Support - Frances Bergmann
 - ★ Atmosphere Q/A - Gwen Fireman



Archive and Distribution (1 of 5)

- ★ L1/Land and Atmospheres Archive and Distribution System (LAADS)
 - ★ public site is available for archive and distribution of Level 1 and atmospheres products
 - ★ Land products are exported to the LP and NSIDC DAACs for subsequent public distribution (following release by the Land Science Team members)
 - ★ A private, password-protected site is used for archive and distribution of Land data products to MODIS Science Team
 - ★ Data products are archived in compressed form; “chunking” has recently been added to L1B products



Archive and Distribution (2 of 5)

- ★ LAADS Atmospheres Archive
 - ★ All Collection 5 geolocation, cloud mask/profiles, browse, and L2+ atmospheres data products are permanently archived online
 - ★ L1B products for CONUS and western Europe are permanently archived online
 - ★ Some product subsets (e.g. Aeronet sites and 5x5 L1B sub-sampler) are also archived
 - ★ Other L1B products are temporarily stored in a data pool with a capacity of approximately 30 production days (500 data-days)



Archive and Distribution (3 of 5)

- ★ LAADS Public Atmospheres Archive (cont)
 - ★ Data no longer in the data pool can be generated on-demand
 - ★ Golden month data including all L3 data products are permanently archived
 - ★ Collection 4 Level 2 data products are archived but will expire per “6-month” rule
 - ★ Certain albedo products generated from the land reprocessing will be available once they are approved for release by the Science Team



Archive and Distribution (4 of 5)

- ★ LAADS Land Archive

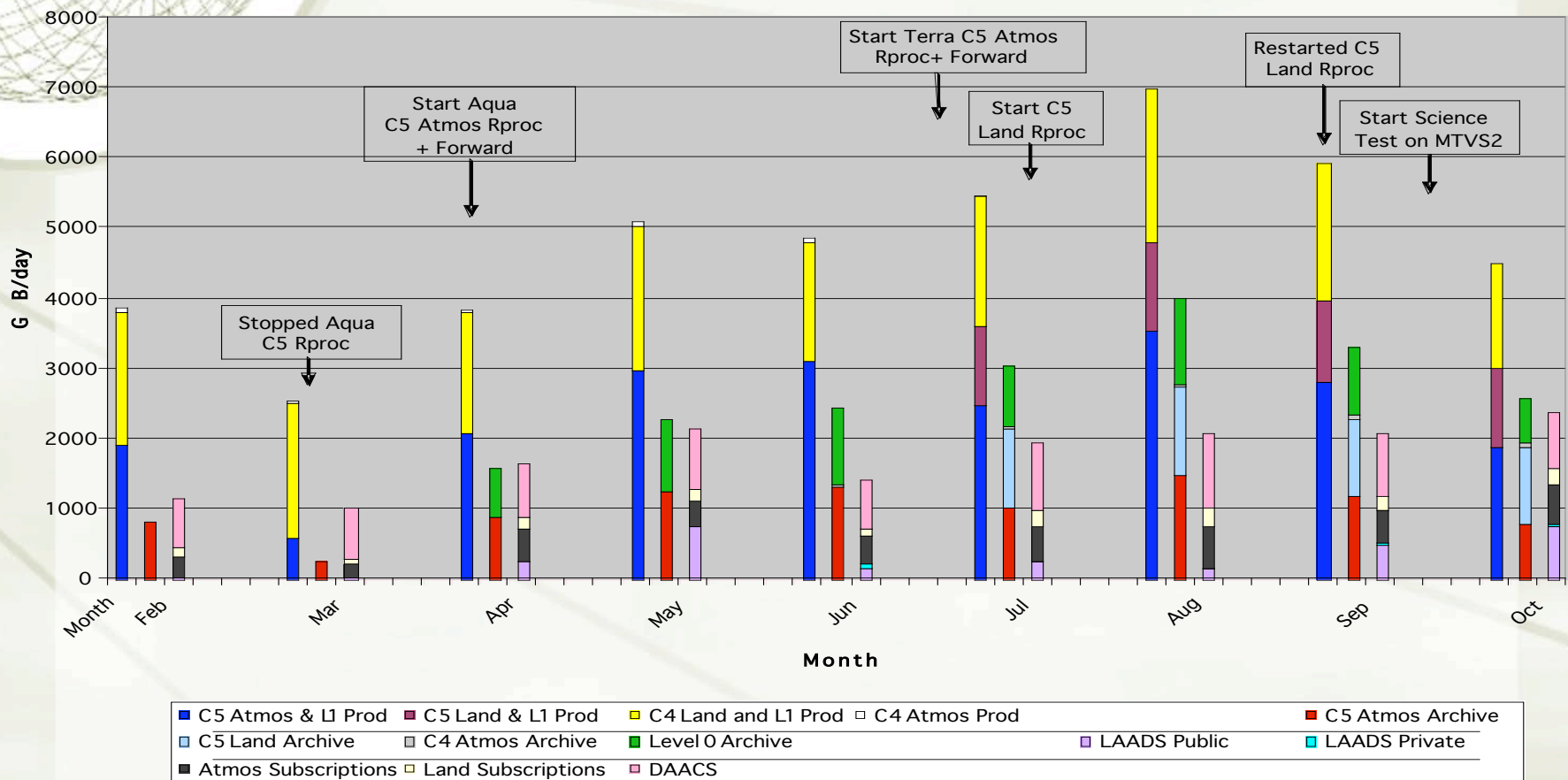
- ★ All Collection 5 Land Surface Temperature, CMGs, Snow and Sea Ice, L2 Fire, and all 8+ day products are permanently archived on line
- ★ Products not in archive are produced on-demand
- ★ All online archives (Level 1, atmosphere and land products) are visible at the Science Team site



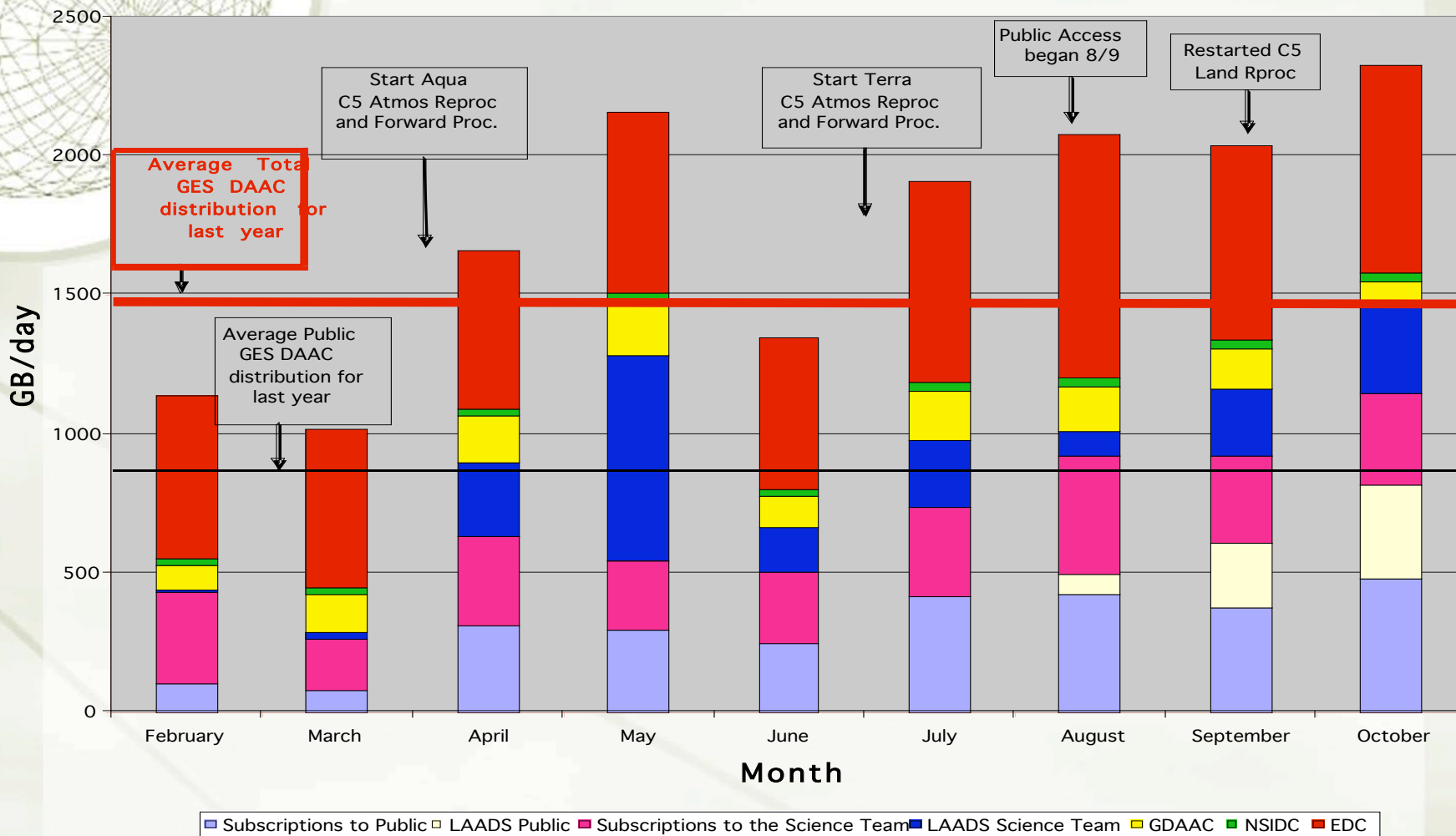
Archive and Distribution (5 of 5)

- ★ Distribution responsibility for L1 and atmospheres data has transitioned to MODAPS/LAADS
- ★ 1TB/day of Collection 4 and 5 data products are being exported to LP and NSIDC DAACs
- ★ 700 GB/day of data products are sent to end users through subscriptions including special sub-sets
- ★ 700 GB/day of data products (175 orders/day) are sent to end users through LAADS
- ★ Searching/ordering is through LAADSWeb or ECHO
- ★ ftp, McIDAS and OPeNDAP servers allow direct access to products in online archives and data pools

Production, Archive and Distribution

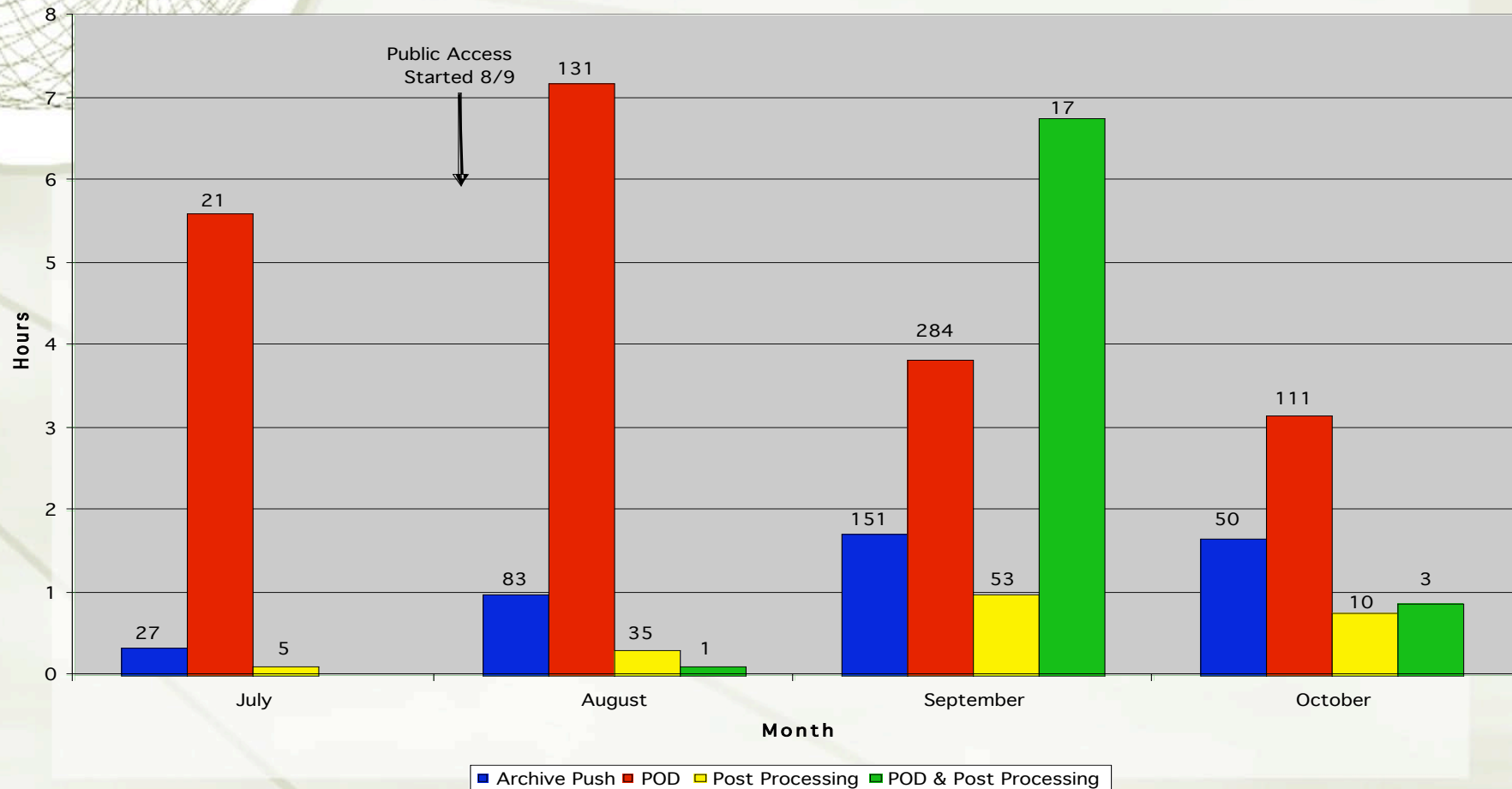


MODAPS/LAADS Data Distribution



LAADS Order Response Time

Order Response Time (Hours)



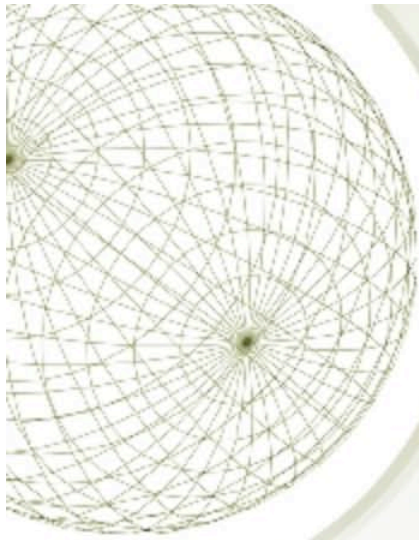


Upcoming LAADS Capabilities

- ◆ LAADS V4 in November will add:
 - ◆ Land metadata searches
 - ◆ Masking
 - ◆ Channel subsetting
 - ◆ L0 data distribution
 - ◆ ECHO interface (September)
 - ◆ Tile reprojection
 - ◆ Multiple web/ftp servers

- ◆ Additional capabilities in 2007 will include:
 - ◆ Granule reprojection, mosaicing, and GeoTIFF
 - ◆ Sub-sampling
 - ◆ Compositing (spatial and temporal)
 - ◆ OGC services and clients

Mosaic Tiles (1 of 2)



LAADS Web -- Search for Level 1 and Atmosphere Products - Mozilla

http://aadsweb.nascom.nasa.gov/data/search.html

NASA GODDARD SPACE FLIGHT CENTER [+ Visit NASA.gov](#)

LAADS Web
Level 1 and Atmosphere Archive and Distribution System

+ HOME - DATA + IMAGES + TOOLS + HELP

Search for Level 1 and Atmosphere Products

Search Parameters

Product: MOD13A2
 Temporal: 2000-193 00:00 - 2000-193 23:59
 Collection: 5
 Spatial: N: -3, S: -16, E: 49, W: -69

Search Results [+ View Help](#)

A total of **6 files (108.98 MB)** match the selected parameters. You may [refine your search](#).

You may modify your order by selecting or clearing each file's checkbox. You may also select or clear the checkboxes for all files by clicking "Select All Checkboxes" or "Clear All Checkboxes".

| Time | Product | File Name | Size | Online | Add | Browse |
|----------------|---------|---|-------|--------|-------------------------------------|---|
| 2000-193 00:00 | MOD13A2 | MOD13A2_A2000193_h11v09.005.2006296201737.hdf | 18 MB | Yes | <input checked="" type="checkbox"/> | + View 16-Day EVI (1km) + View 16-Day NDVI (1km) |
| | MOD13A2 | MOD13A2_A2000193_h11v10.005.2006296204844.hdf | 17 MB | Yes | <input checked="" type="checkbox"/> | + View 16-Day EVI (1km) + View 16-Day NDVI (1km) |
| | MOD13A2 | MOD13A2_A2000193_h12v09.005.2006296203605.hdf | 19 MB | Yes | <input checked="" type="checkbox"/> | + View 16-Day EVI (1km) + View 16-Day NDVI (1km) |
| | MOD13A2 | MOD13A2_A2000193_h12v10.005.2006297044025.hdf | 19 MB | Yes | <input checked="" type="checkbox"/> | + View 16-Day EVI (1km) + View 16-Day NDVI (1km) |
| | MOD13A2 | MOD13A2_A2000193_h13v09.005.2006297033936.hdf | 17 MB | Yes | <input type="checkbox"/> | + View 16-Day EVI (1km) + View 16-Day NDVI (1km) |
| | MOD13A2 | MOD13A2_A2000193_h13v10.005.2006297051047.hdf | 19 MB | Yes | <input type="checkbox"/> | + View 16-Day EVI (1km) + View 16-Day NDVI (1km) |

[Select All Checkboxes](#) [Clear All Checkboxes](#)

Please note that you can still order files that are not online. These files will be regenerated when you place your order. However, you will not receive these files immediately; you will be notified by email when they are ready.

[Add Files To Shopping Cart](#) [Order Files Now](#)

FIRSTGOV [+ Privacy Policy and Important Notices](#) **NASA** Webmaster: Karen Horrocks
 NASA Official: Ed Masuoka
[+ Send Us Your Comments](#)

Mosaic Tiles (2 of 2)

LAADS Web - Mozilla

File Edit View Go Bookmarks Tools Window Help

NASA GODDARD SPACE FLIGHT CENTER + Visit NASA.gov

LAADS Web
Level 1 and Atmosphere Archive and Distribution System

+ HOME - DATA + IMAGES + TOOLS + HELP

Set Post Process Criteria

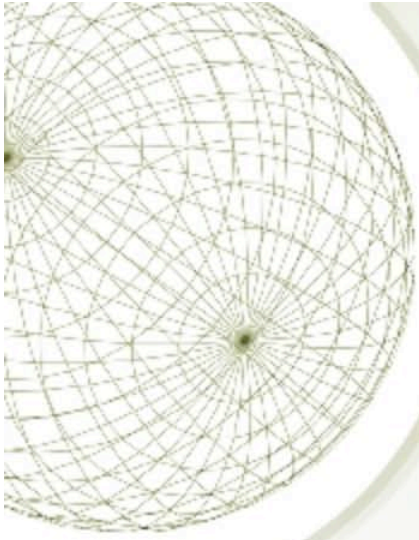
You have selected a total of **4 files** to post-process. Each product file will be processed using the stages listed below.

Mosaic
You have chosen to mosaic your products. We do this by grouping adjacent tiles or granules for the same day and product type, and "attaching" their adjacent edges together into one large product. If you selected other post-processing, it will be performed on the resulting mosaic product. No additional information is needed to mosaic your products.

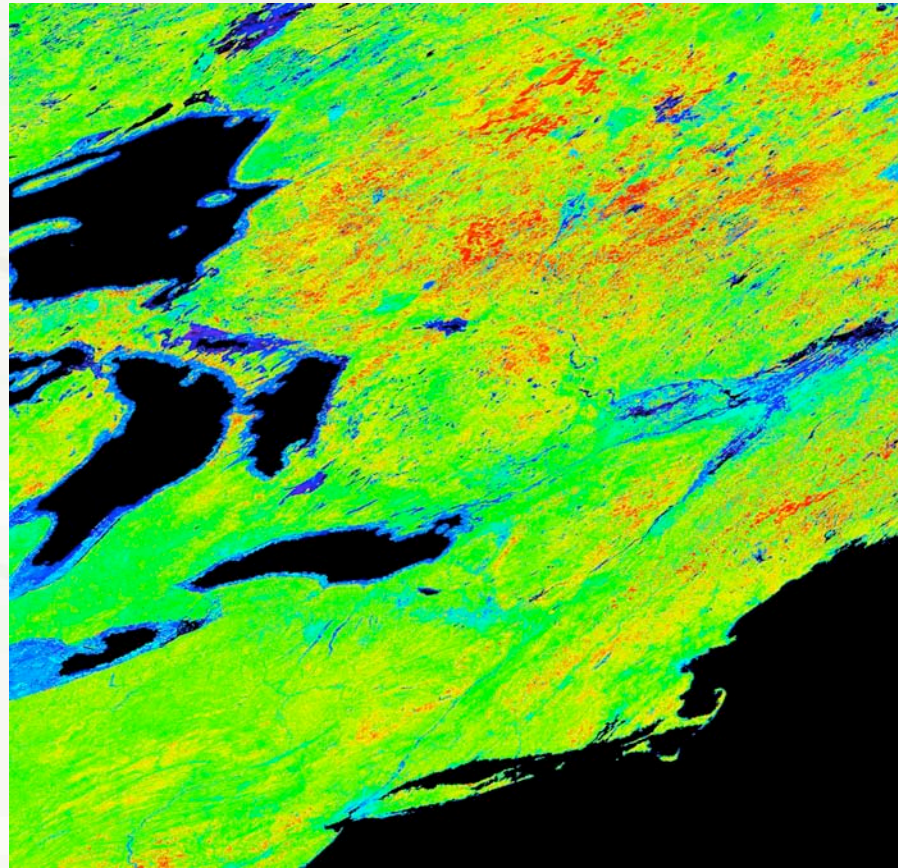
Order

FIRST GOV
Your First Click to the U.S. Government + Privacy Policy and Important Notices

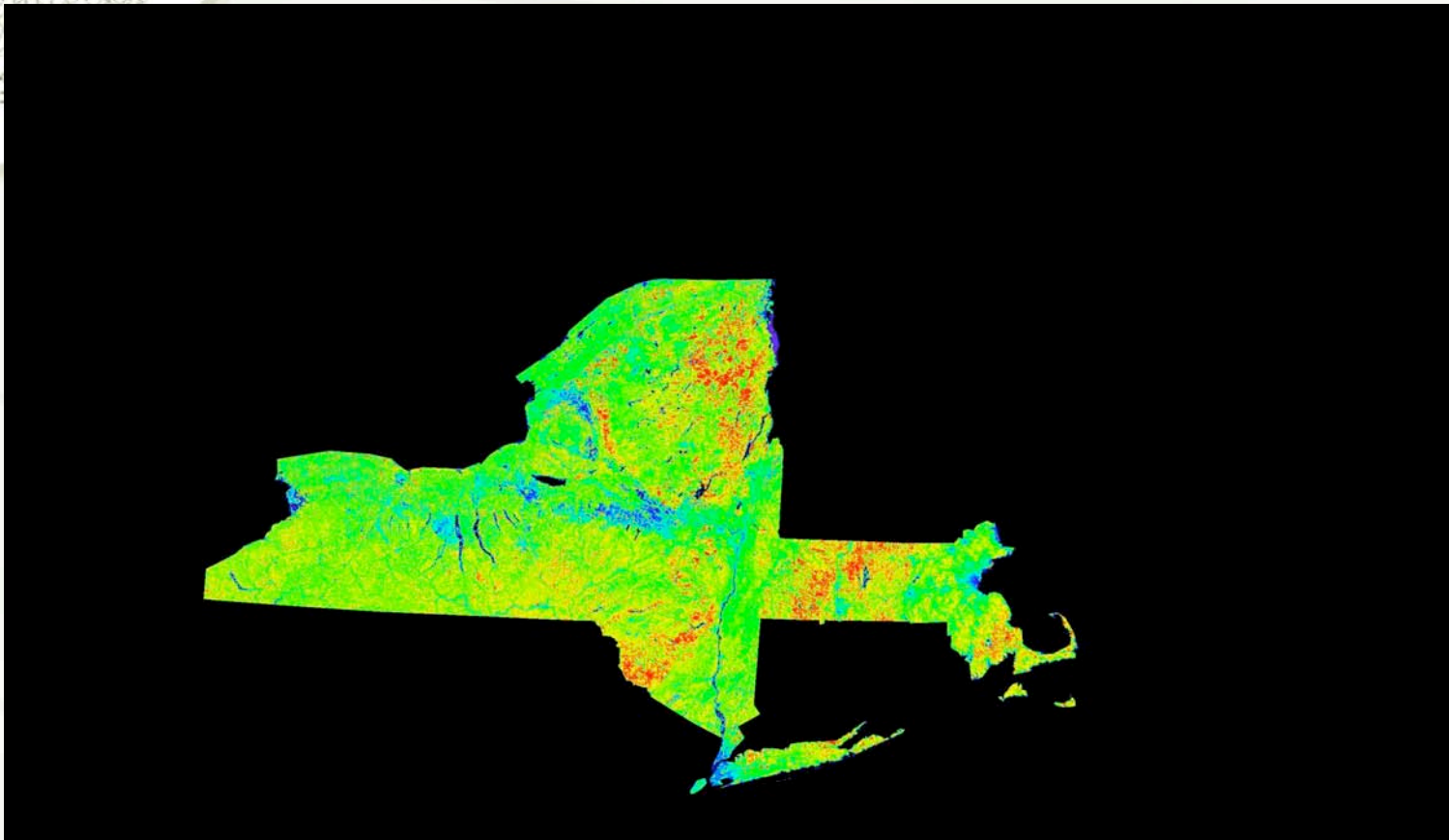
xv 3.10a(PNG): MOSAIC.NDVI.MOD13A2.A2000193.Amazon.005.gif



EVI 500m March 6, 2000



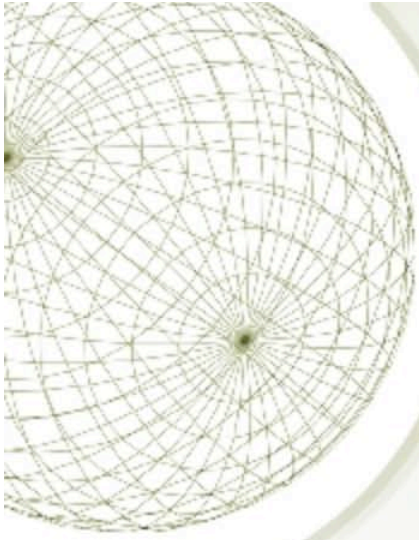
*EVI 500m - Subset, Mask,
Reprojection (Albers)*





URLs

- ★ The address of the public LAADS web site is <http://ladsweb.nascom.nasa.gov>
- ★ The public ftp site is located at ladsftp.nascom.nasa.gov
- ★ The MODAPS Services web site address is <http://modaps.nascom.nasa.gov/services>
- ★ For access to the private LAADS site contact Mike Teague at opsman@saicmodis.com



Backup Material



MODAPS Production (1 of 2)

◆ Atmospheres

- ◆ Forward processing - Collection 5 for Aqua and Terra
- ◆ Collection 5 Reprocessing
 - ◆ Reprocessing rate of 14x to 15x
 - ◆ Approximately 70% of the 10 data years have been reprocessed including all Aqua data
 - ◆ **Collection 5 reprocessing will be done by January 2007**
- ◆ A separate reprocessing of Aqua aerosol data products for LUT changes and the “deep blue” algorithm will finish in April 2007



MODAPS Production (2 of 2)

◆ Land

- ◆ Forward processing - Collection 4 for Aqua and Terra
 - ◆ Collection 5 will start when the Aqua codes have passed science testing (NLT January 1, 2007)
- ◆ Collection 5 Reprocessing
 - ◆ The reprocessing rate is 7.2x to 8x
 - ◆ Terra reprocessing started in June and restarted in September because of multiple PGE changes
 - ◆ **Reprocessing will be done Fall 2008**
 - ◆ Earlier finish is possible with a 3rd reprocessing string, options are being studied