

MODIS C6 Geolocation Status

MODIS Science Team Meeting
Plenary Session

April 15, 2013

Robert Wolfe,
Mash Nishihama and
James Kuyper

MODIS Geolocation Team

NASA GSFC Code 619





Geolocation C5/C6 results

Terra

- Excellent results – Root Mean Square Error (RMSE) in nadir equivalent units is better than accuracy goal
- Large errors occur ~1.5 hr after maneuvers (about 12 per year)
 - accuracy in following orbit suspect

Aqua

- Good results – RMSE is better than goal in track direction but slightly over goal in scan direction (but much better than specification – 150 m)
- Definitive ephemeris is used for best results – causes up to 24 hr processing delay

	Terra		Aqua	
	C5	C6	C5	C6
Along-track RMSE (m)	43	42	48	46
Along-scan RMSE (m)	44	42	53	51
Years of Data	13.1		10.7	
Ground Control Point Match-ups/day	263		227	

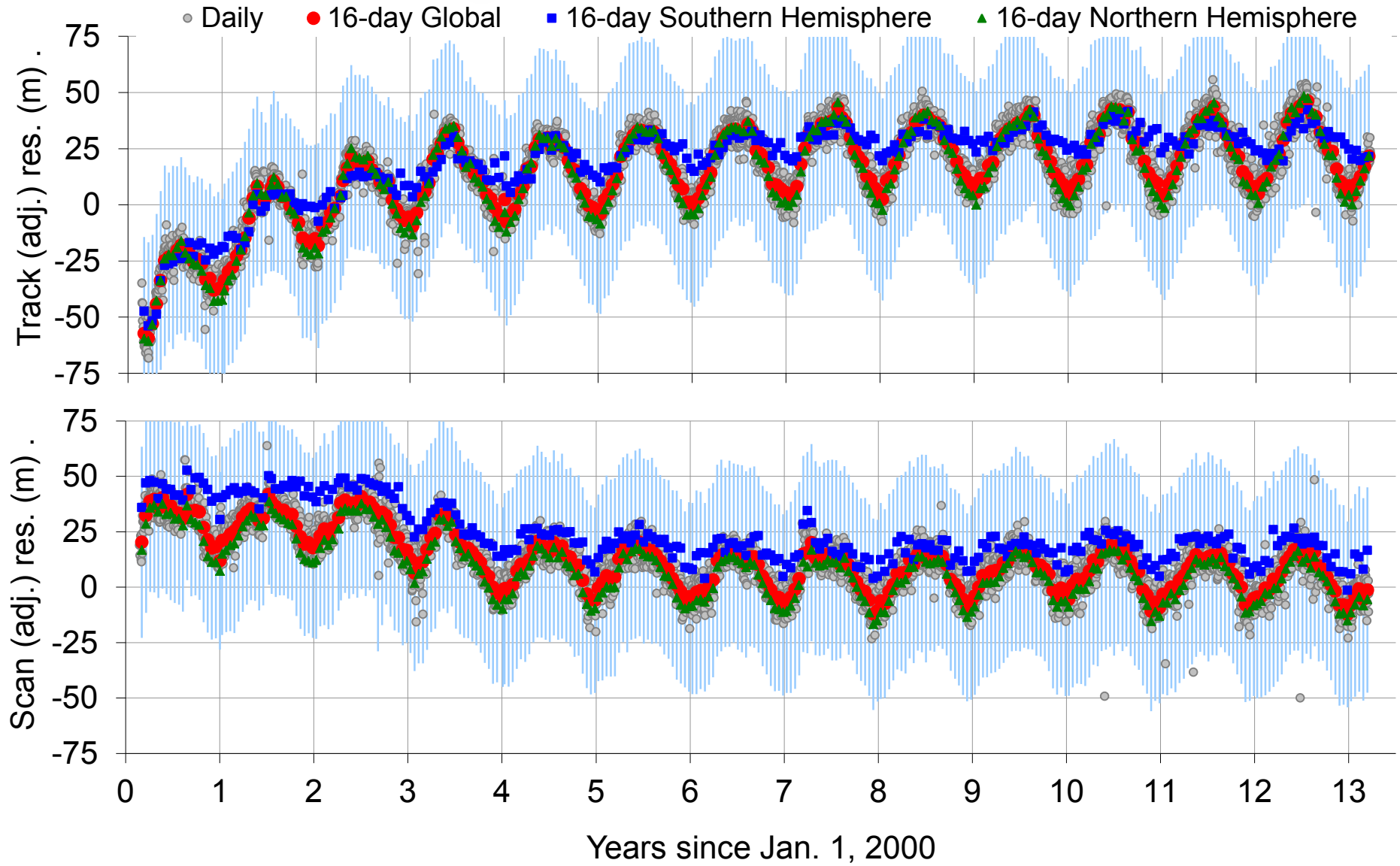
Note: These results are for MODIS Band 1, which is used in the control point matchup. Other bands must be offset by the band-offsets published by the MODIS calibration team.



Terra trend and update details



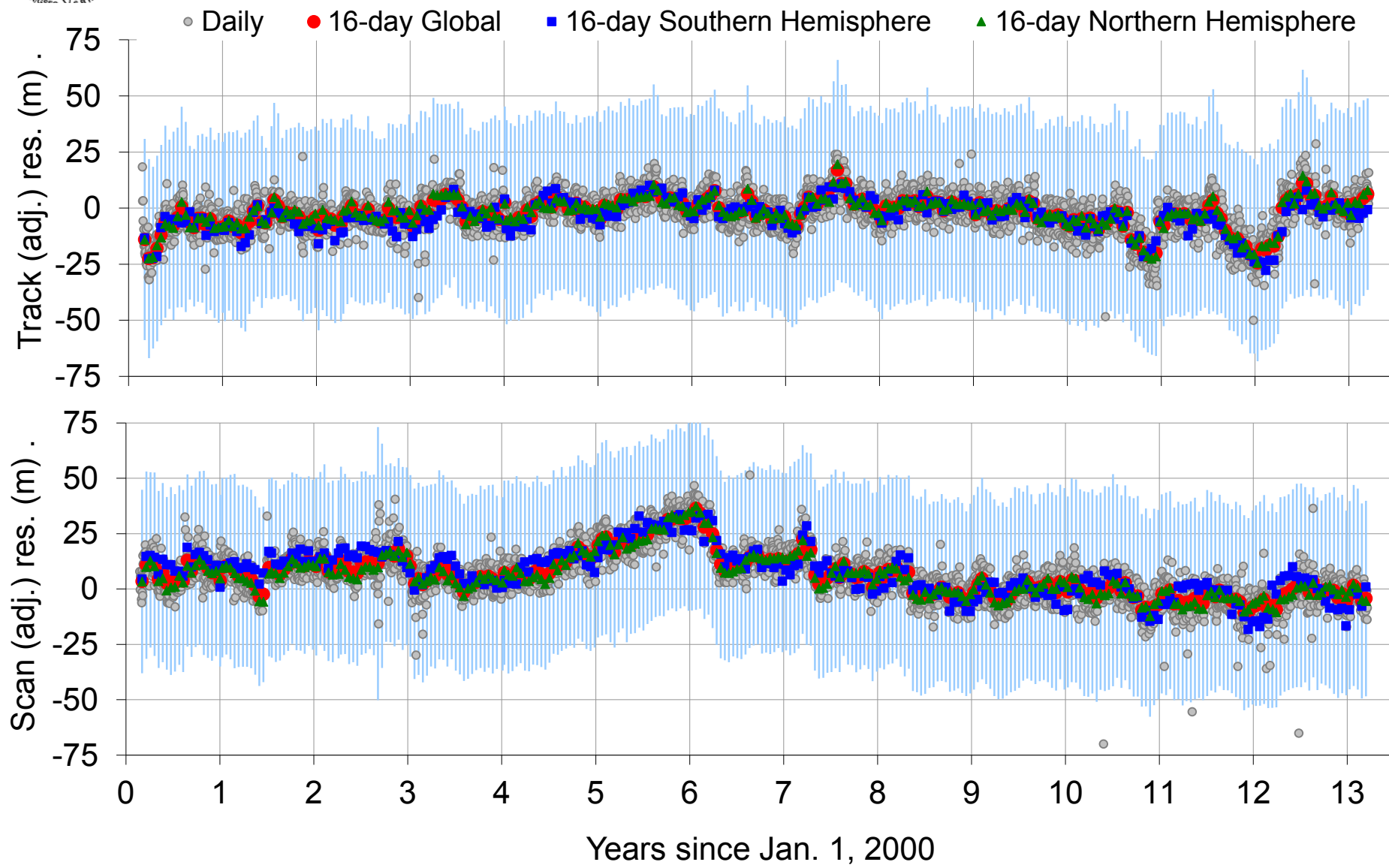
Terra long-term trend (w/o correction)



RMSE with no correction: Track: 49 m (+7 m vs C6) Scan: 47 m (+5 m vs C6)



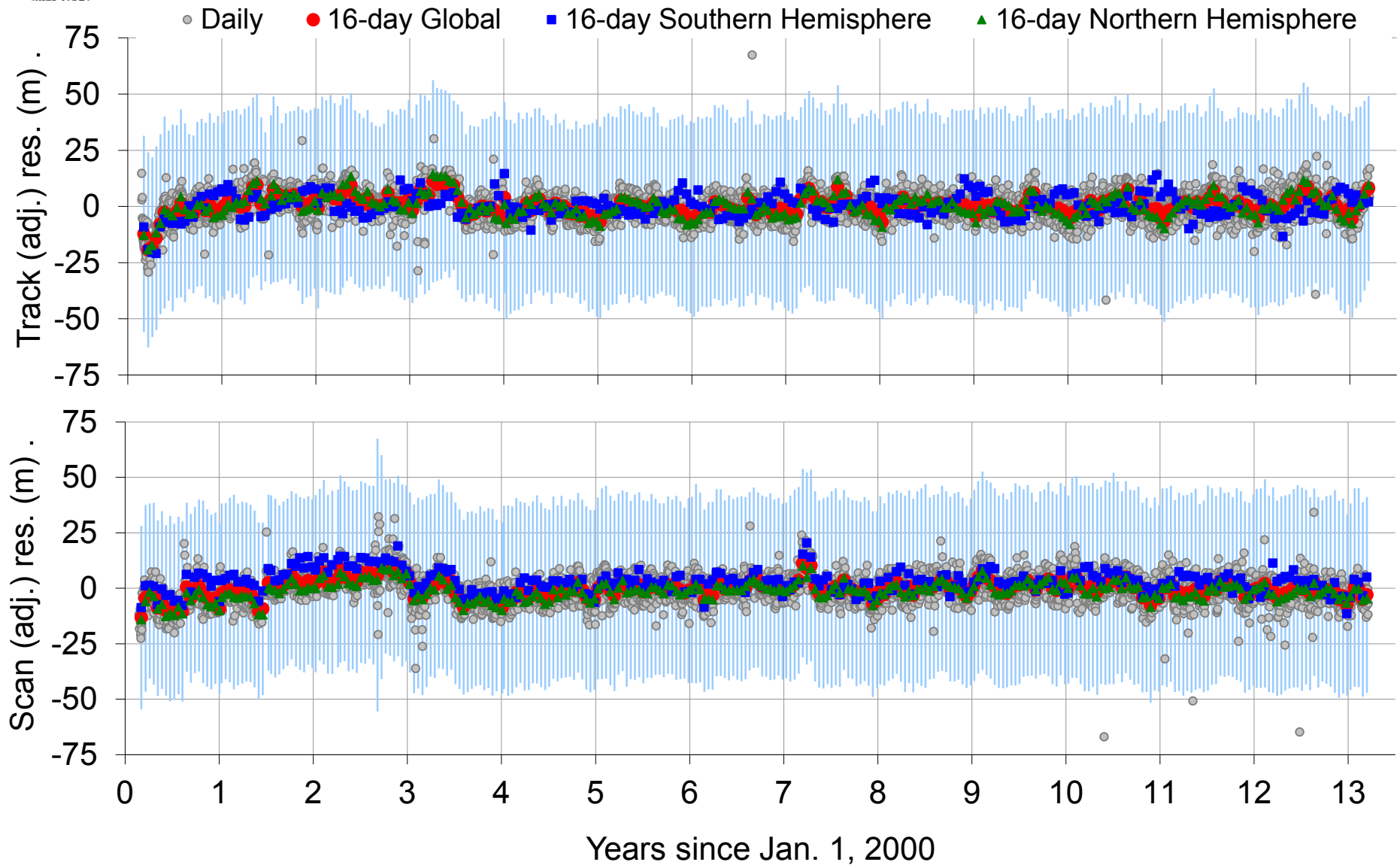
Actual Terra C5 residuals



C5 RMSE Track: 43 m Scan: 44 m



Terra C6 residuals (estimated)

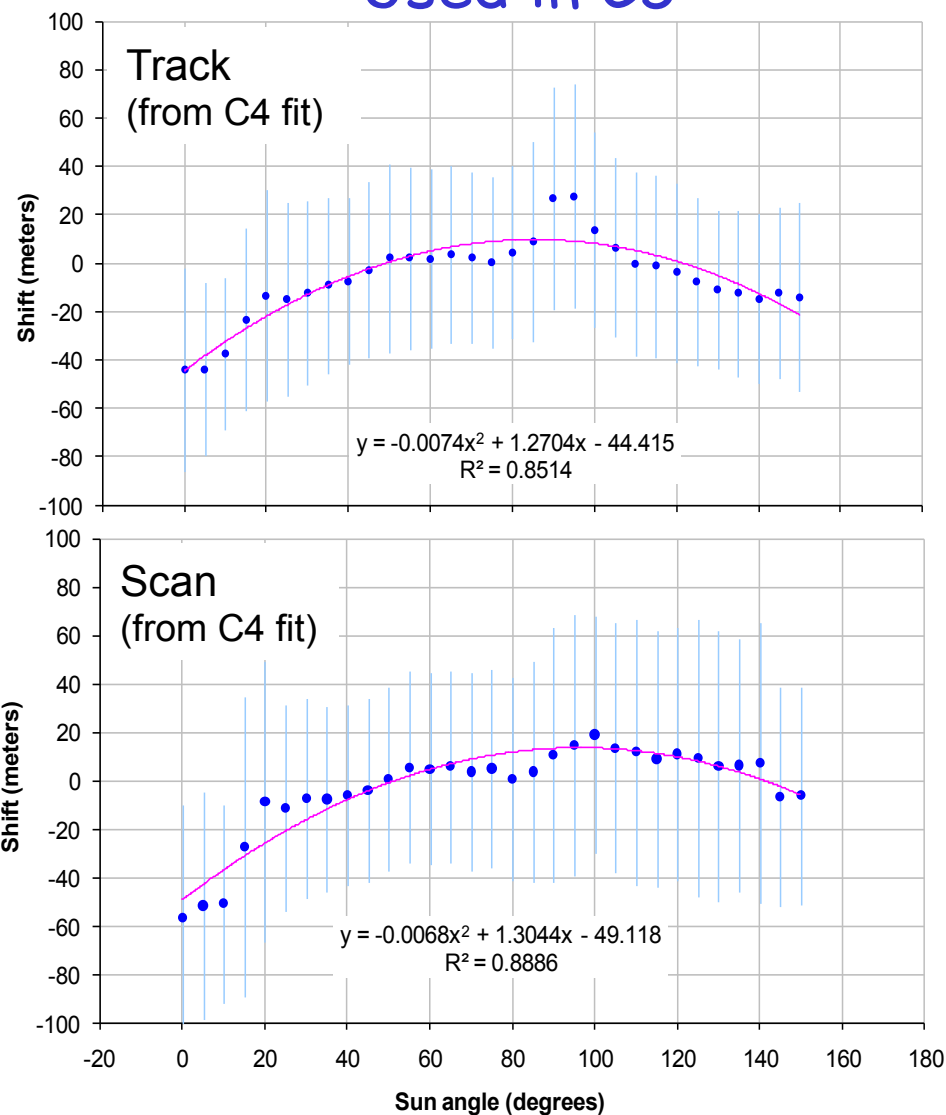


C6 RMSE Track: 42 m (-1 m vs C5) Scan: 42 m (-2 m vs C5)

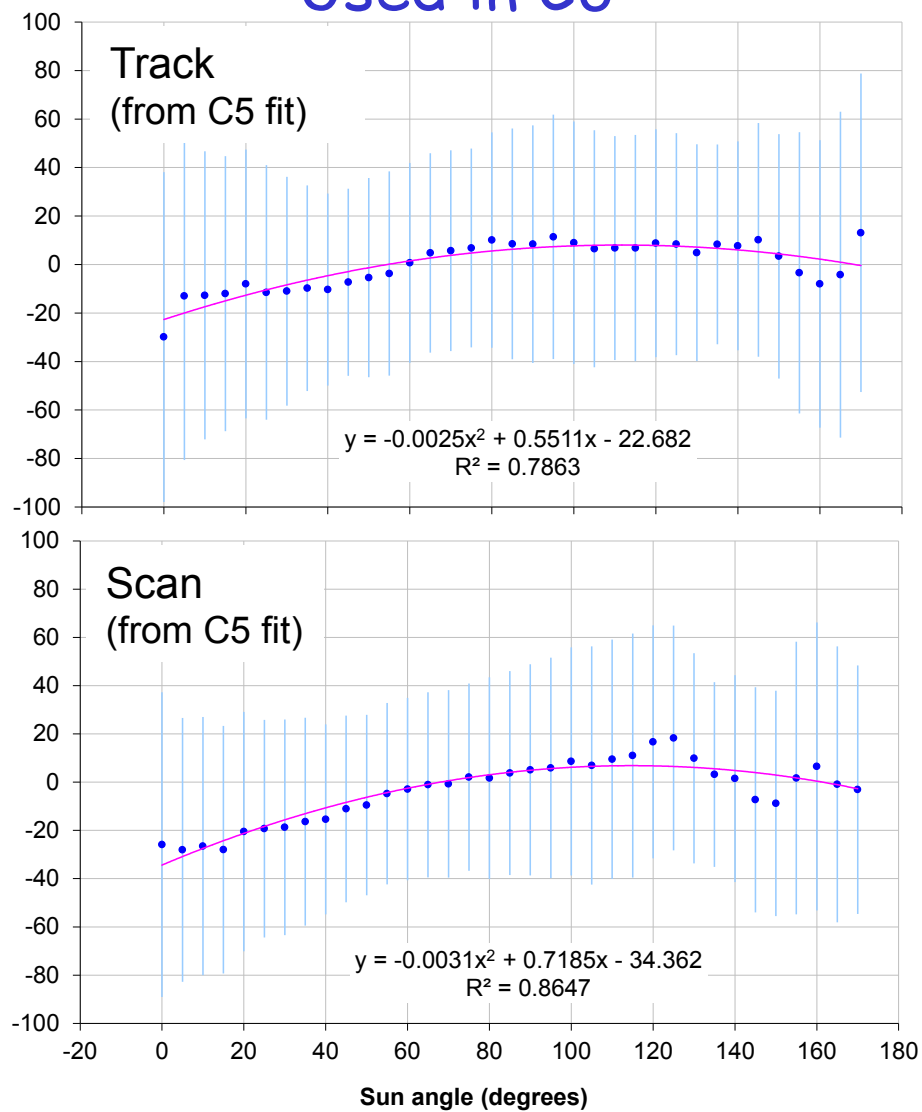


Terra Sun angle Correction

Used in C5



Used in C6

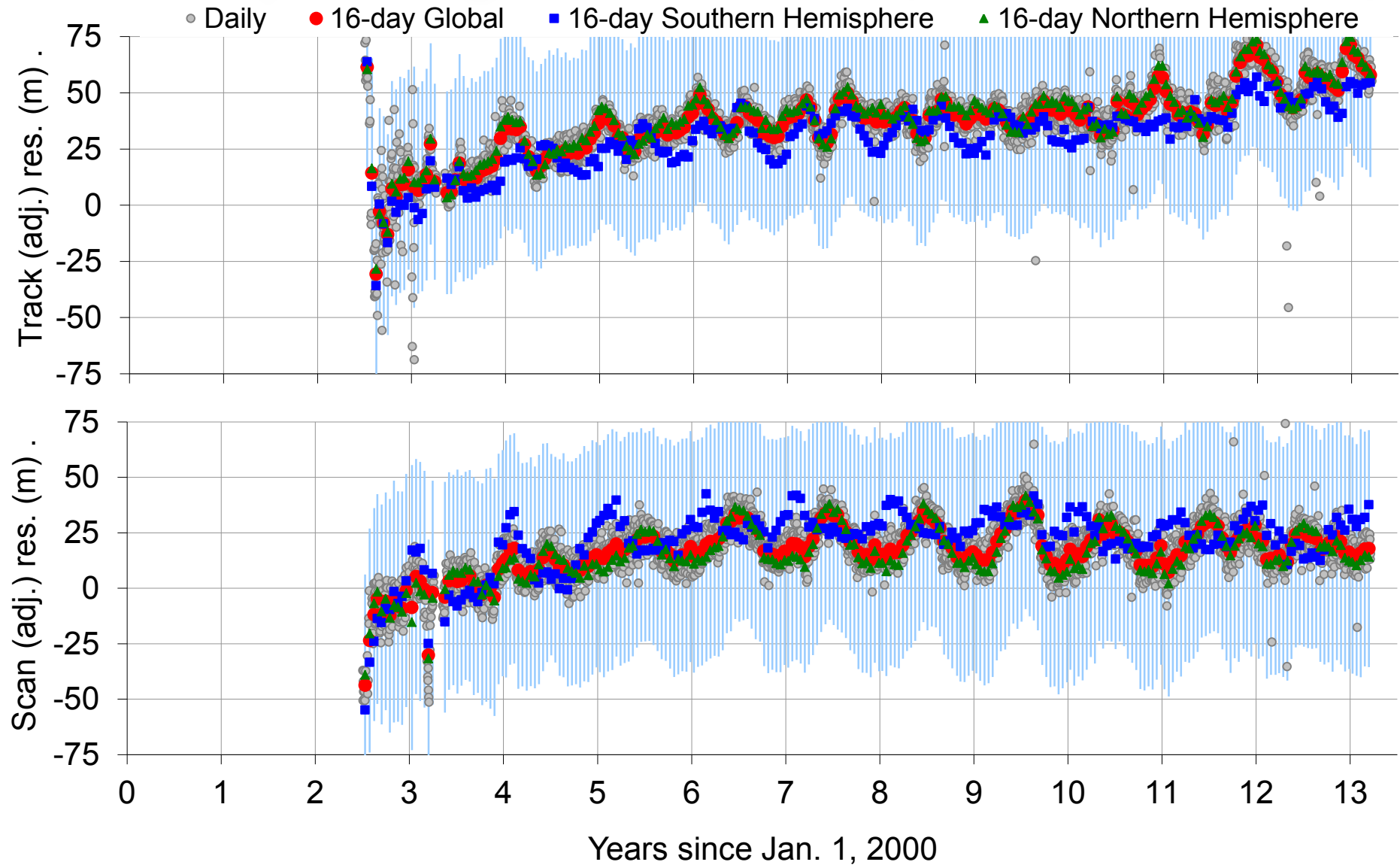




Aqua trend and update details



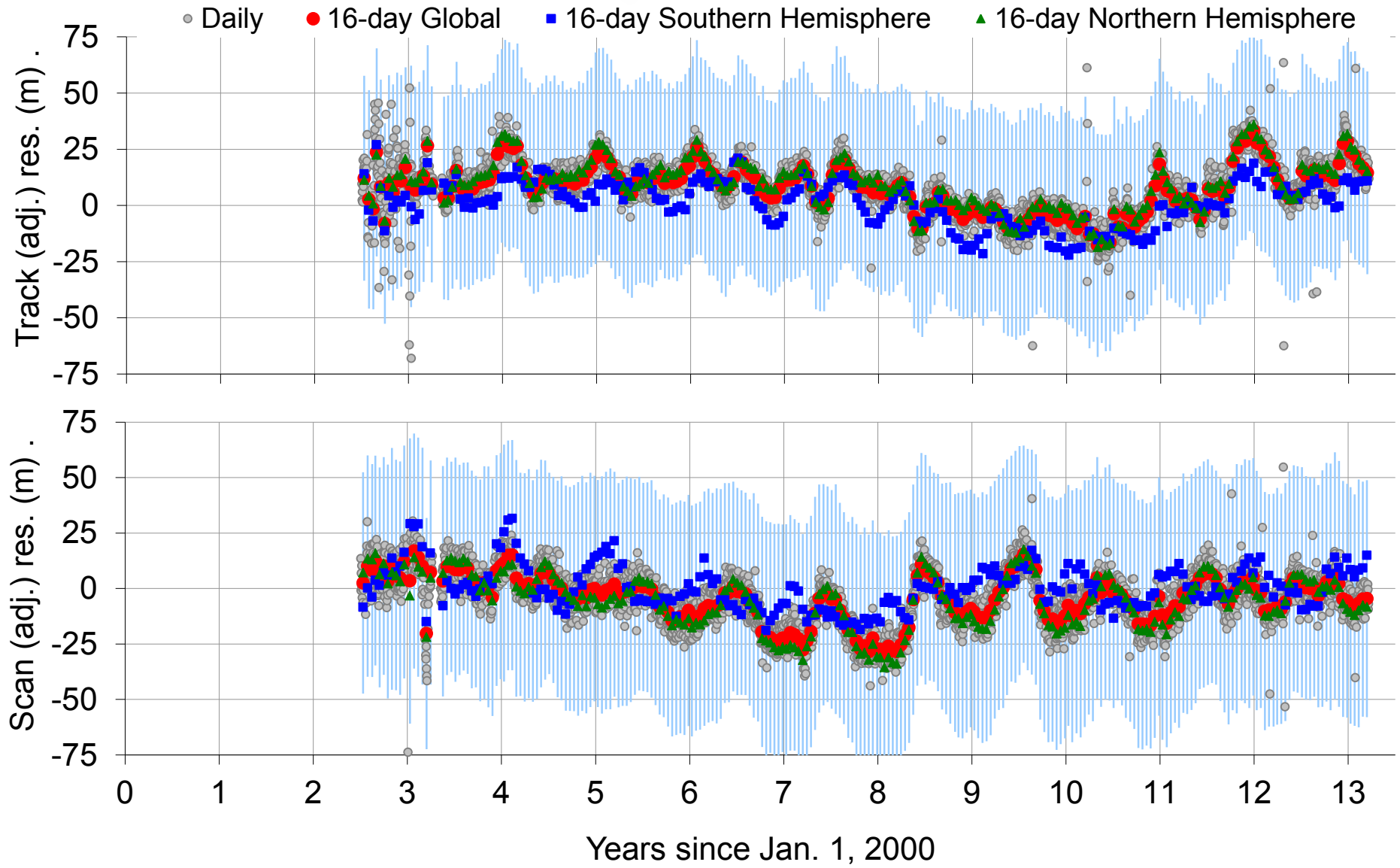
Aqua Long-term Trend (w/o Correction)



RMSE with no correction: Track: 60 m (+15 m vs C6) Scan: 56 m (+5 m vs C6)



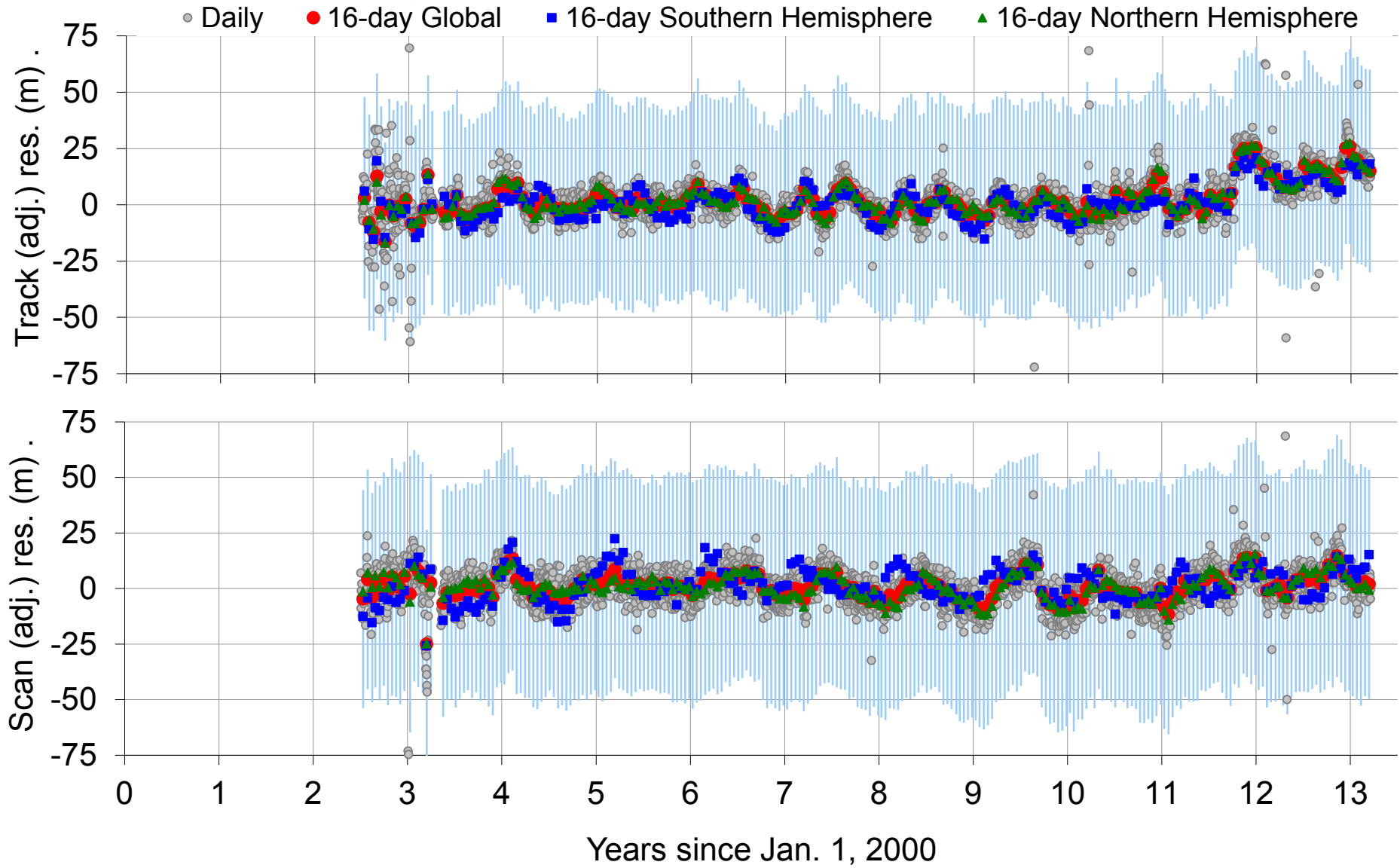
Actual Aqua C5 residuals



C5 RMSE Track: 48 m Scan: 53 m



Aqua C6 residuals (estimated)

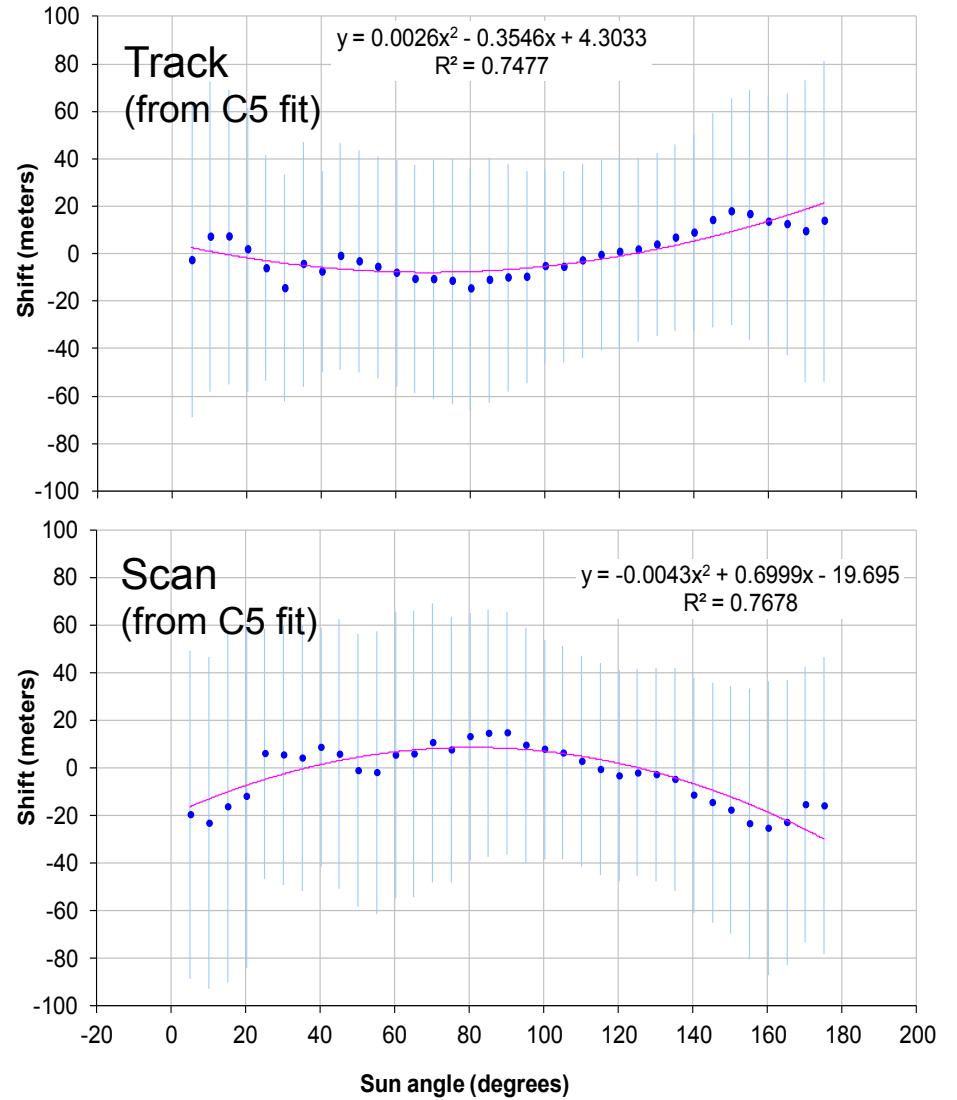


C6 RMSE Track: 46 m (-2 m vs C5) Scan: 51 m (-2 m vs C5)



Aqua Sun angle Correction

- Track and Scan sun-angle effects
- no correction in C5
- used in C6



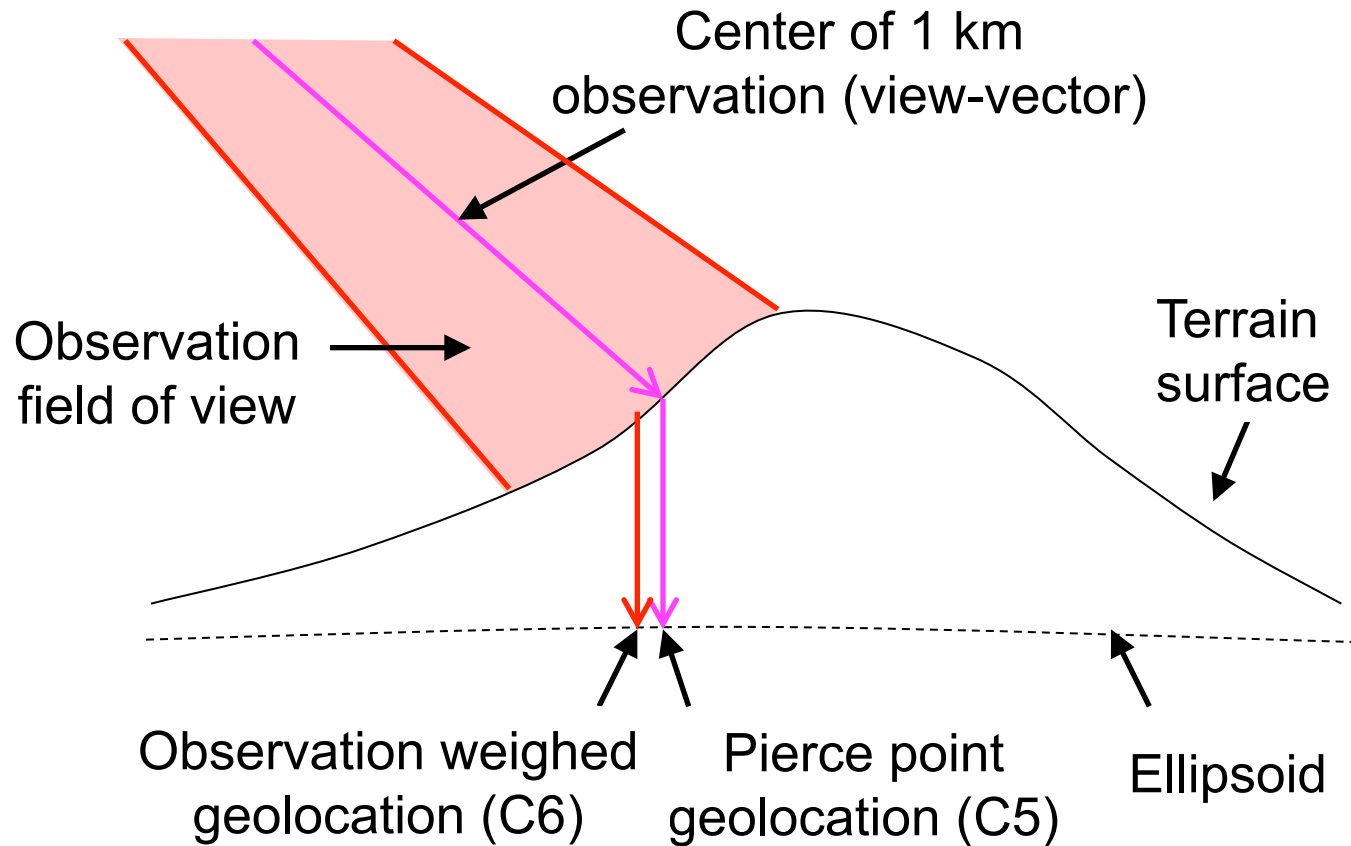


C6 Changes - Algorithm (Science)

1. Update error analysis: use C5 residuals to update long-term trend, sun-angle corrections and geometric parameter biases
2. Incorporate new ancillary data
 - a. Improved 500m Shuttle Radar Terrain Mission (SRTM) Digital Elevation Model data
 - b. Improved Land/water mask (500m) developed by UMD
3. Compute 500m geolocation and provide in the form of 8-bit offsets from a bilinear-interpolation of the 1 km data
4. Enhanced 1 km terrain correction (area based)
 - synergistic with 500m geolocation, since weighted average of 500m pixel centers is used to approximate 1km time-integrated weighting function



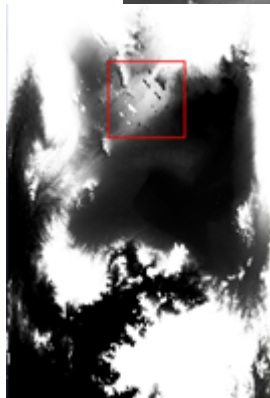
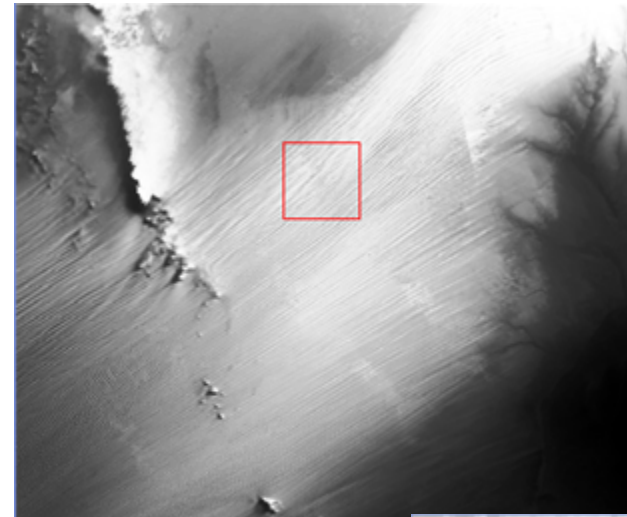
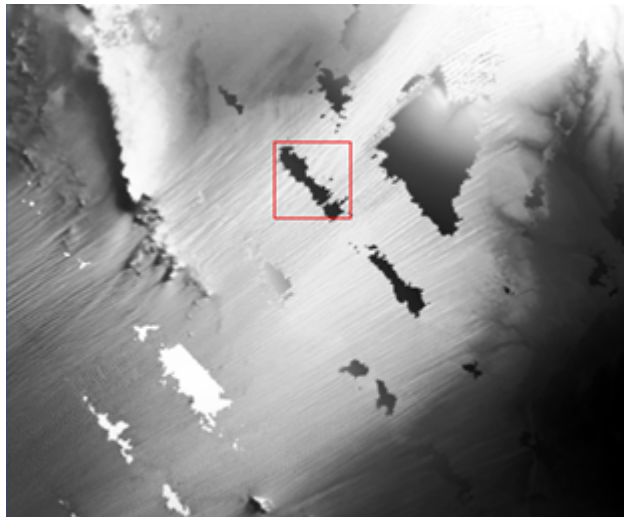
C6 observation weighted terrain correction





Old vs. New DEM

MODIS Geolocation Height (data-day 2010/221)



Current DEM
(C5)



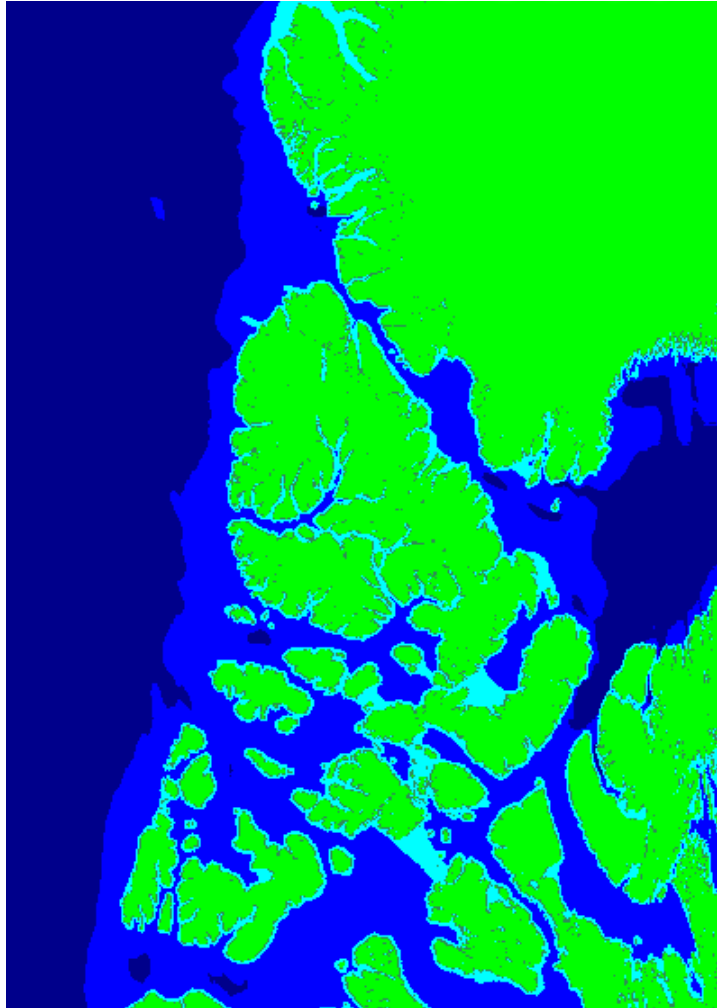
New DEM
(C6)



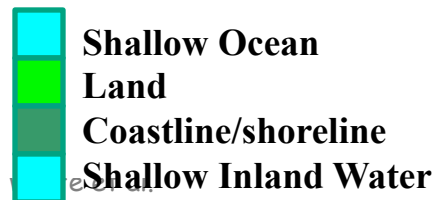
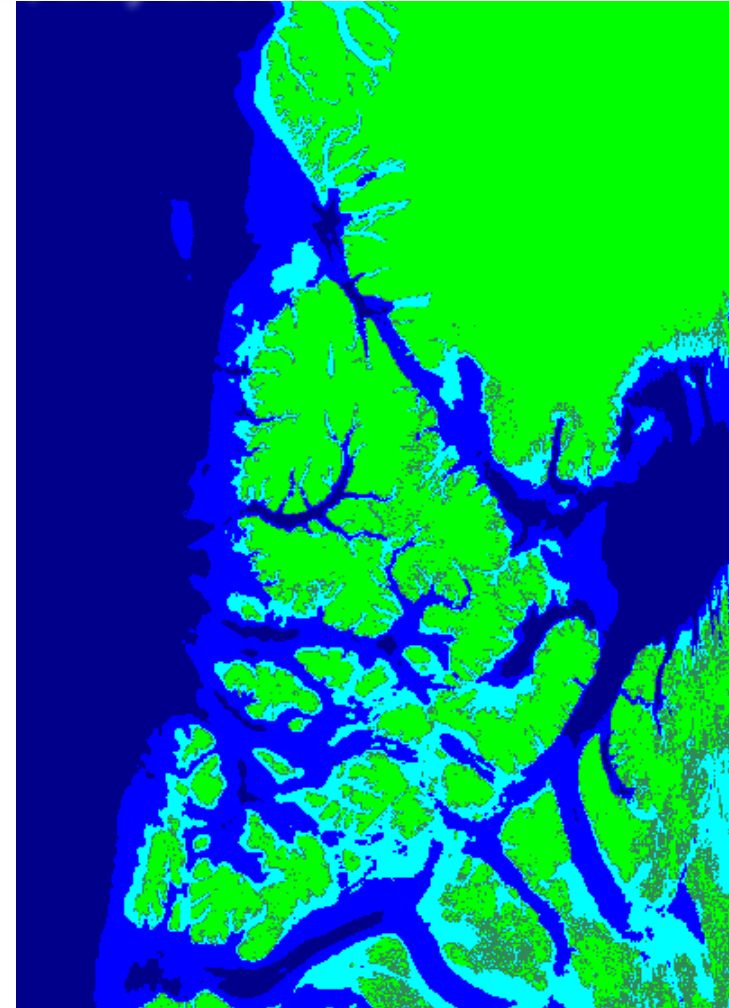
New Land Water Mask in C6 MOD03

Terra Granule 19:25, Day 2003-193

C5



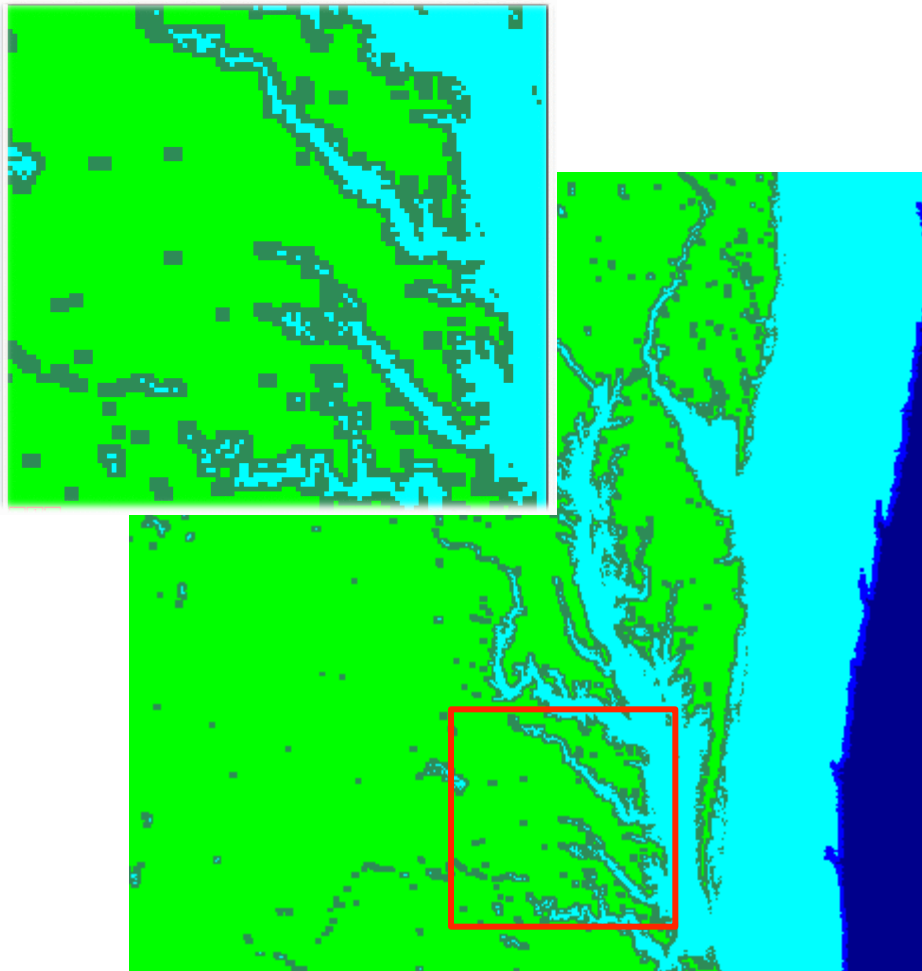
C6



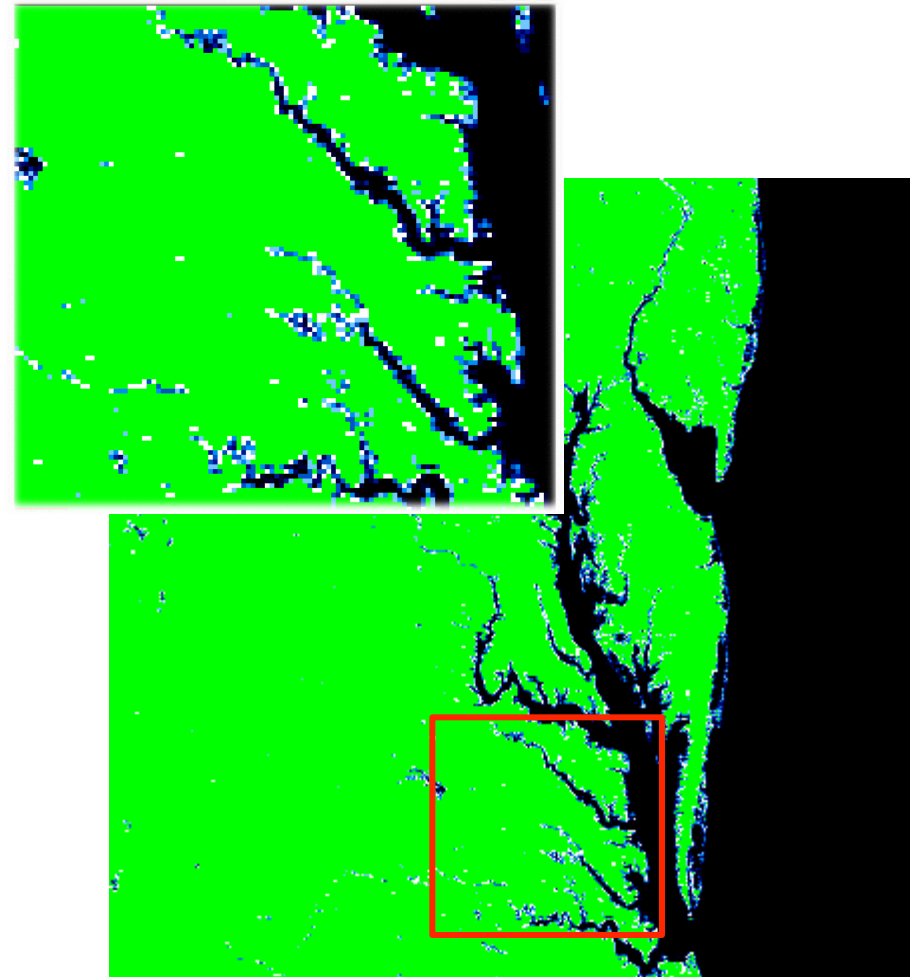




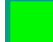





New Water Present in C6 MOD03

Land Water Mask



Water Present



- | | | | |
|---|----------------------|---|-------------------|
|  | Shallow Ocean |  | Ephemeral Water |
|  | Land |  | Deep Inland Water |
|  | Coastline/shoreline |  | Moderate Ocean |
|  | Shallow Inland Water |  | Deep Ocean |





Questions?