



National Snow and Ice Data Center
Supporting Cryospheric Research Since 1976



MODIS Data at NSIDC

MODIS Science Team Meeting – Jan 27, 2010

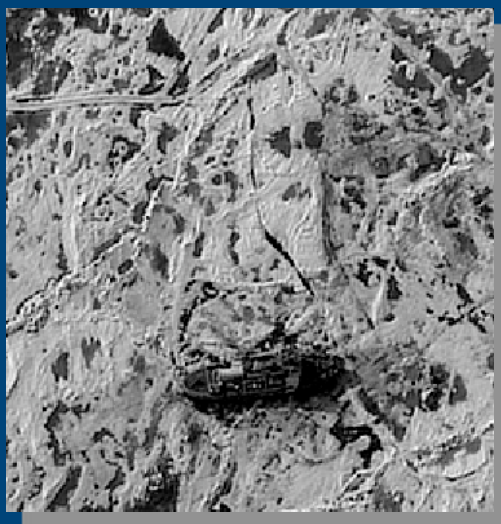
Outline

- NSIDC overview
- ECS status and plans
- MODIS distribution metrics
- Other MODIS-related products & services at NSIDC

Our Mission

To *make fundamental contributions to cryospheric science and excel in managing data and disseminating information* in order to advance understanding of the Earth system.

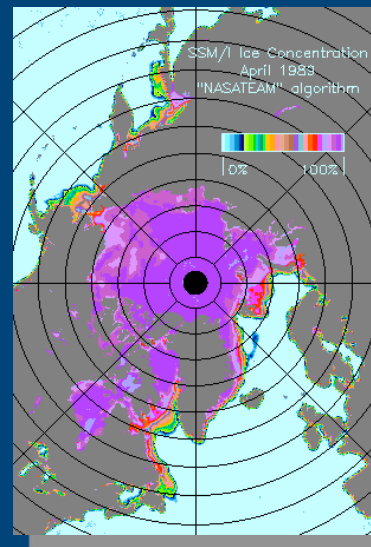
Data Management and Distribution



Outreach

*International
Data Activities*

Research



Institutional Relationships

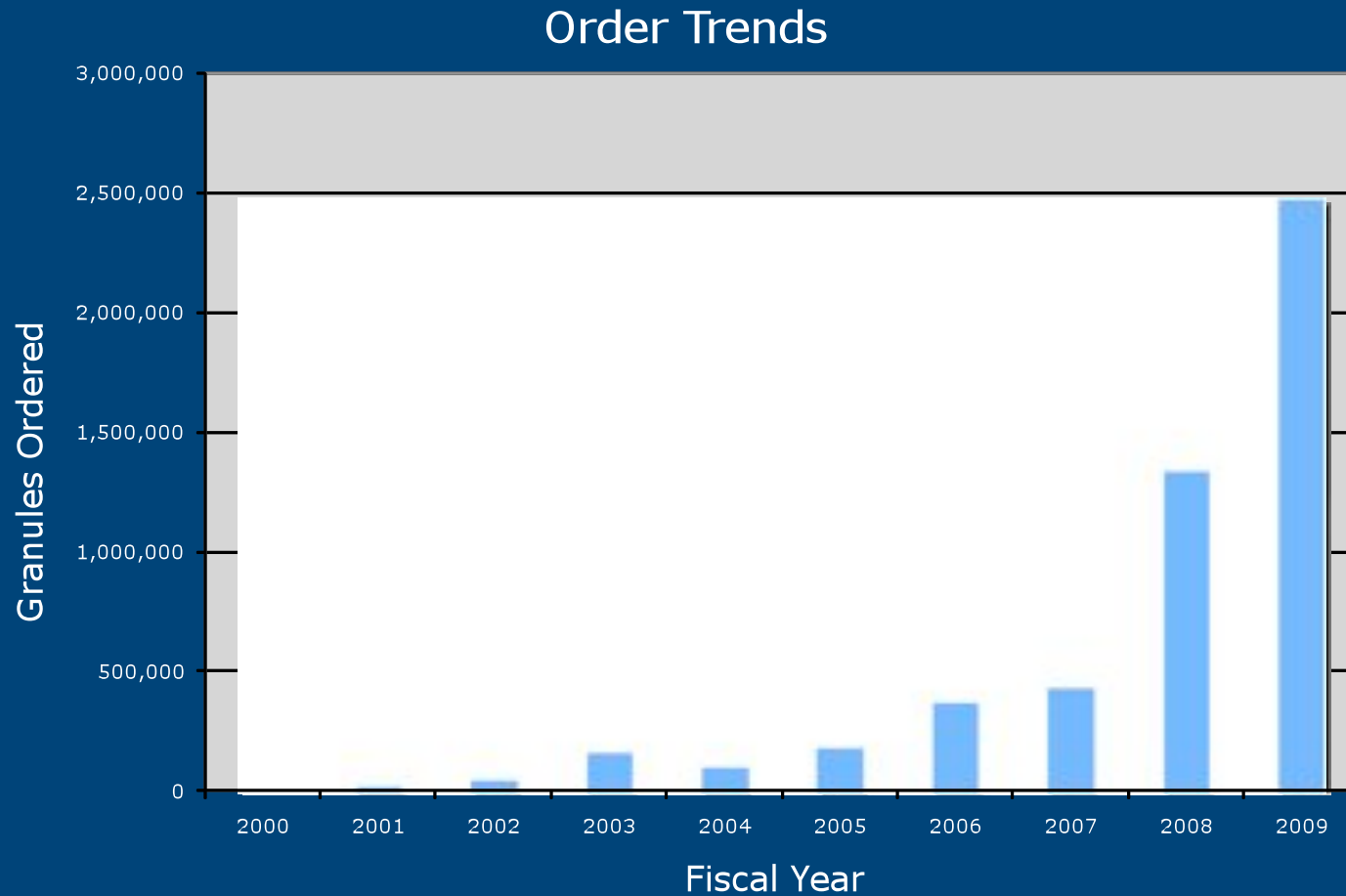
- Part of the University of Colorado
- Within the CU Cooperative Institute for Research in Environmental Sciences (CIRES) Cryospheric and Polar Processes Division
- Chartered by NOAA's National Environmental Satellite, Data, and Information Service. Affiliated with the NOAA National Geophysical Data Center (NGDC)
- Funded by NASA, NOAA, NSF, and others at the program level
- Part of the World Data Center system



Data System Status and Plans

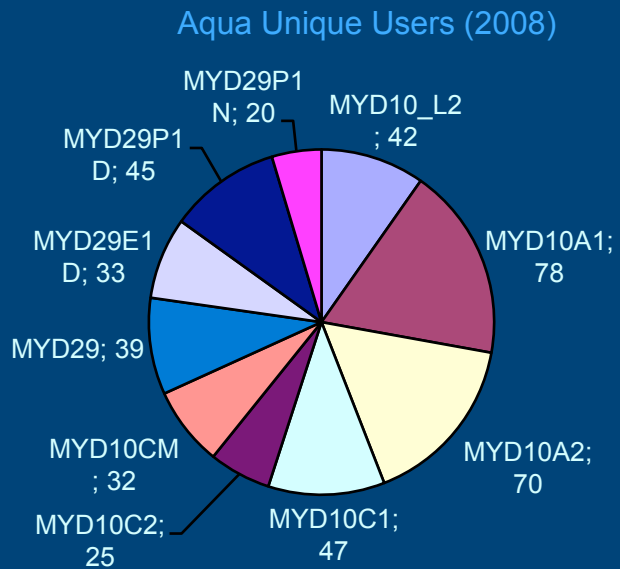
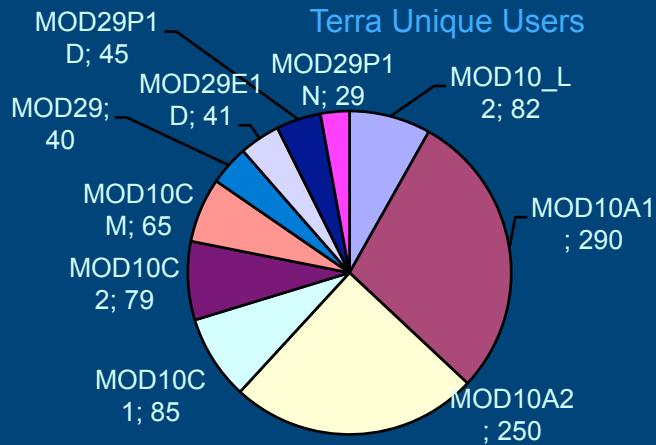
- NSIDC's MODIS support provided by the NASA supplied ECS data system
- ECS reconfiguration continues
 - Removal of the Powderhorn Tape Archive complete
 - ECS production software now running completely on Linux platforms
 - Rel 7.23 delivery and installation this spring
 - Will include new capability to order Browse data
- Entire DAAC archive is now stored on an on-line archive
 - Collection 5 MODIS snow and ice products are available on-line

MODIS Data Orders

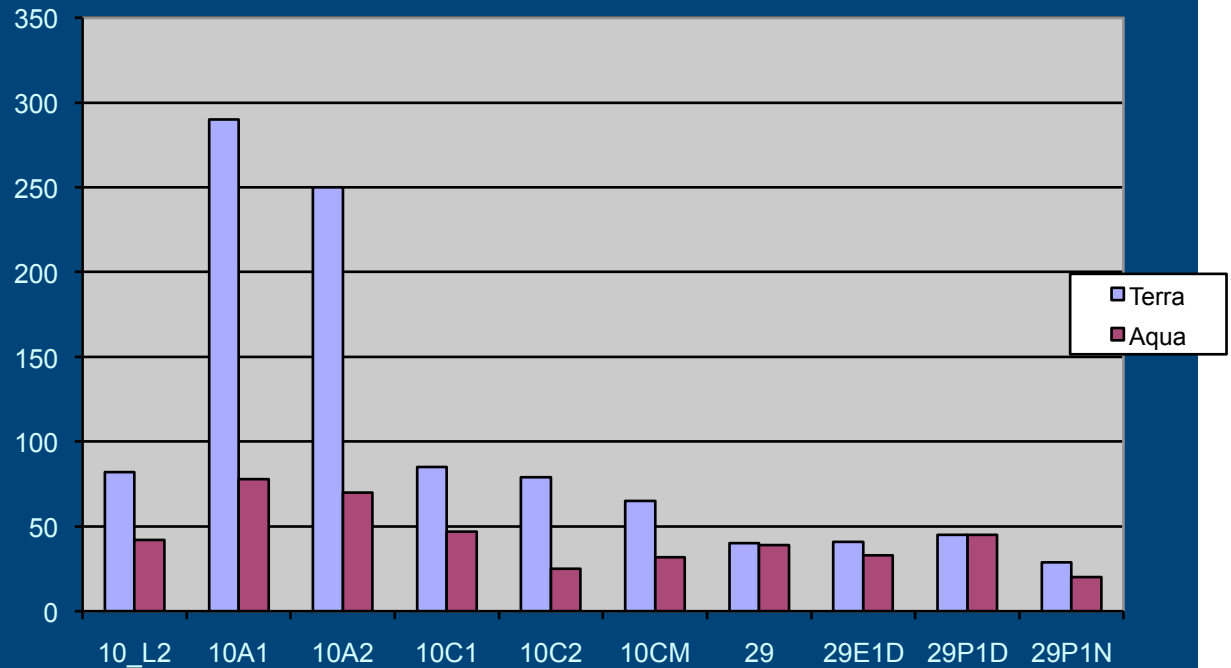


Metrics - Distinct MODIS Users - 2008

1437 unique MODIS users



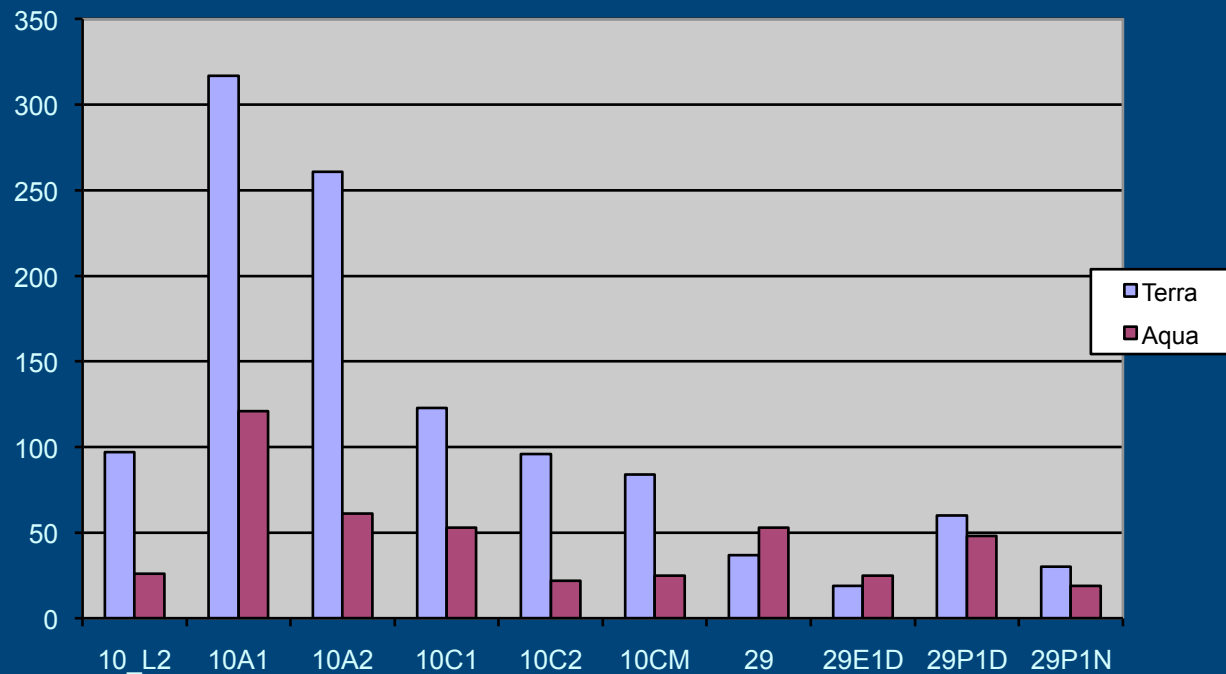
Unique Users by Product



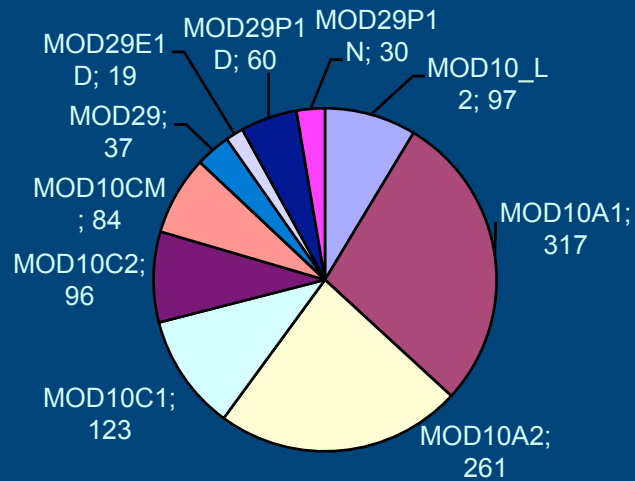
Metrics - Distinct MODIS Users - 2009

1597 unique MODIS users

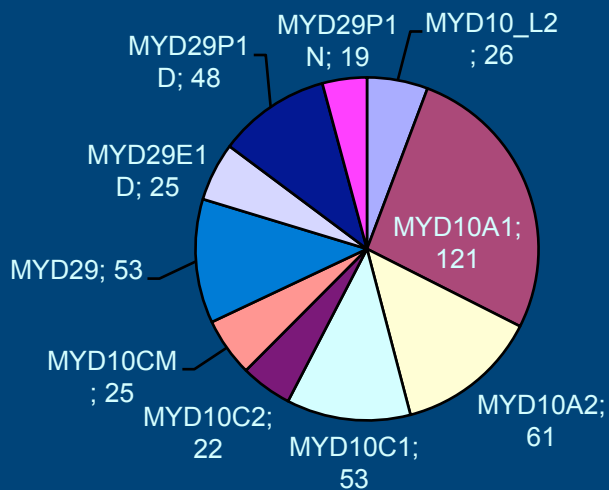
Unique Users by Product



Terra Unique Users (2009)

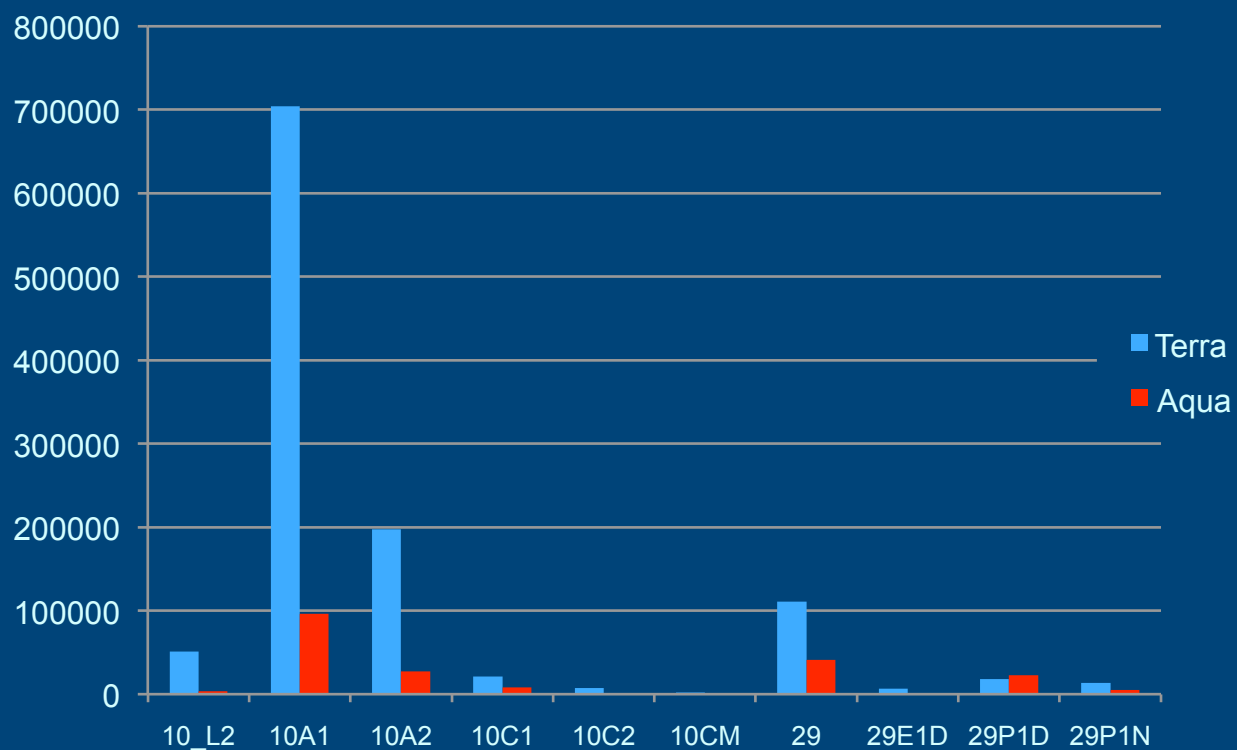


Aqua Unique Users 2009



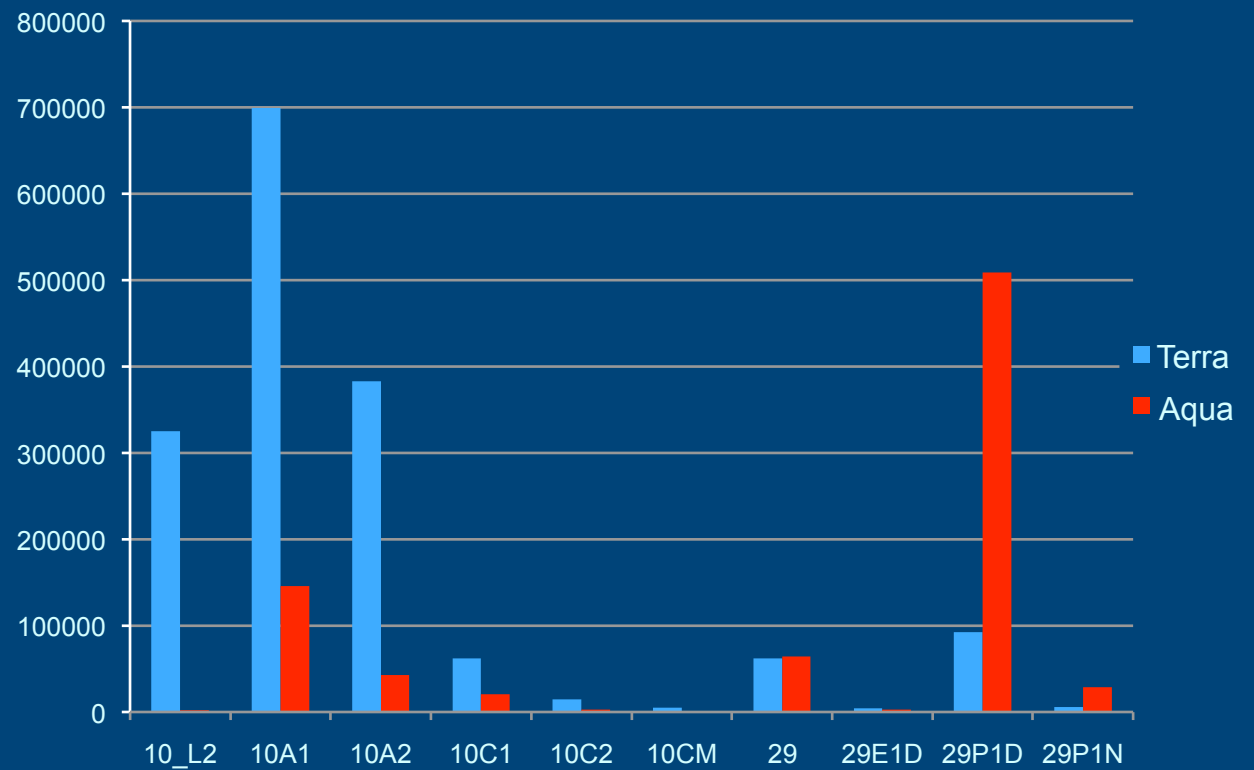
Metrics - Granules Ordered - 2008

Granules	Ordered
Aqua	206959
Terra	1132878
Combined	1339837



Metrics - Granules Ordered - 2009

Granules	Ordered
Aqua	819713
Terra	1132878
Combined	2473294



Other MODIS-based Products

- Surface morphology and snow grain size (Antarctica)
- MODIS-enhanced radar and ICESAT altimetry-based DEM of West Antarctica
 - ~1 m accuracy with resolution of ~250 m)
- Blended snow products
 - Currently using SSM/I & MODIS
 - Plans to use AMSR-E & MODIS
- MODIS Melt Pond product (awaiting approval ?)
 - Daily, EASE-grid fractional coverage of melt ponds, white ice, snow-covered ice and open water in the Beaufort/Chukchi Seas

MODIS-related Interfaces and Services

- Map-server interface to the Mosaic of Antarctica
 - <http://nsidc.org/data/moa/>
- Atlas of the Cryosphere
 - <http://nsidc.org/data/atlas/>
 - WMS, WFS, and WCS access to underlying MOA and Blue Marble data
- WMS, WCS services for MOD10C1 re-projected to a polar projection on-the-fly, northern hemisphere only

MODIS-related Interfaces and Services (cont.)

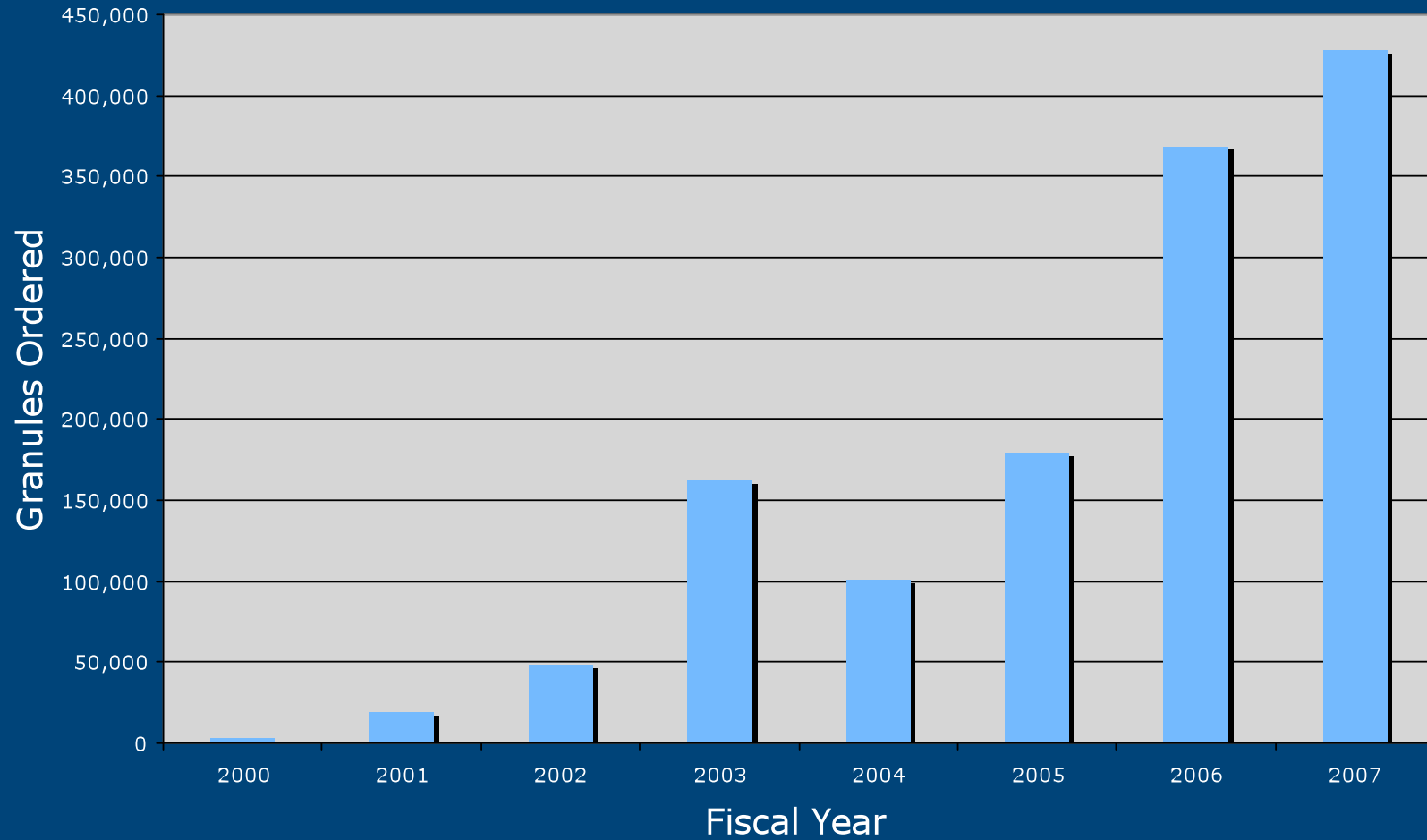
- MODIS Interactive Subsetting Toolkit (MIST)
 - MOD09A1, MOD10A1, MOD11A2, MCD43A1 subsets over GC-NET and IASOA stations
 - On-line interactive graphics and analysis support
 - Which of these additional capabilities would be helpful?
 - Additional stations
 - Data from other spacecraft (e.g., AMSR-E)
 - Other MODIS products
 - GC-NET and IASOA in-situ station data
 - Additional graphics/analysis capabilities
 - Generic subset specification (location and size)
 - Data in other formats

Backup Slides



MODIS Data Orders

Order Trends



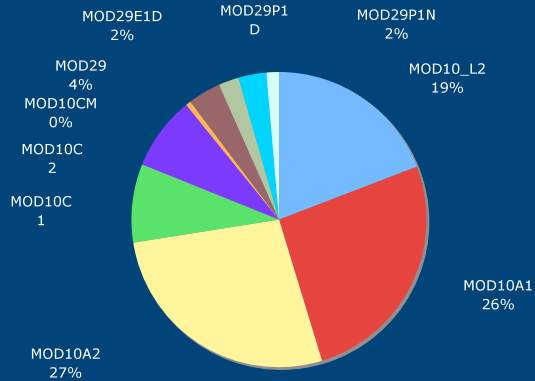
MODIS Data at NSIDC - R. Duerr
Presented at the MODIS Science Team Meeting, May, 2008



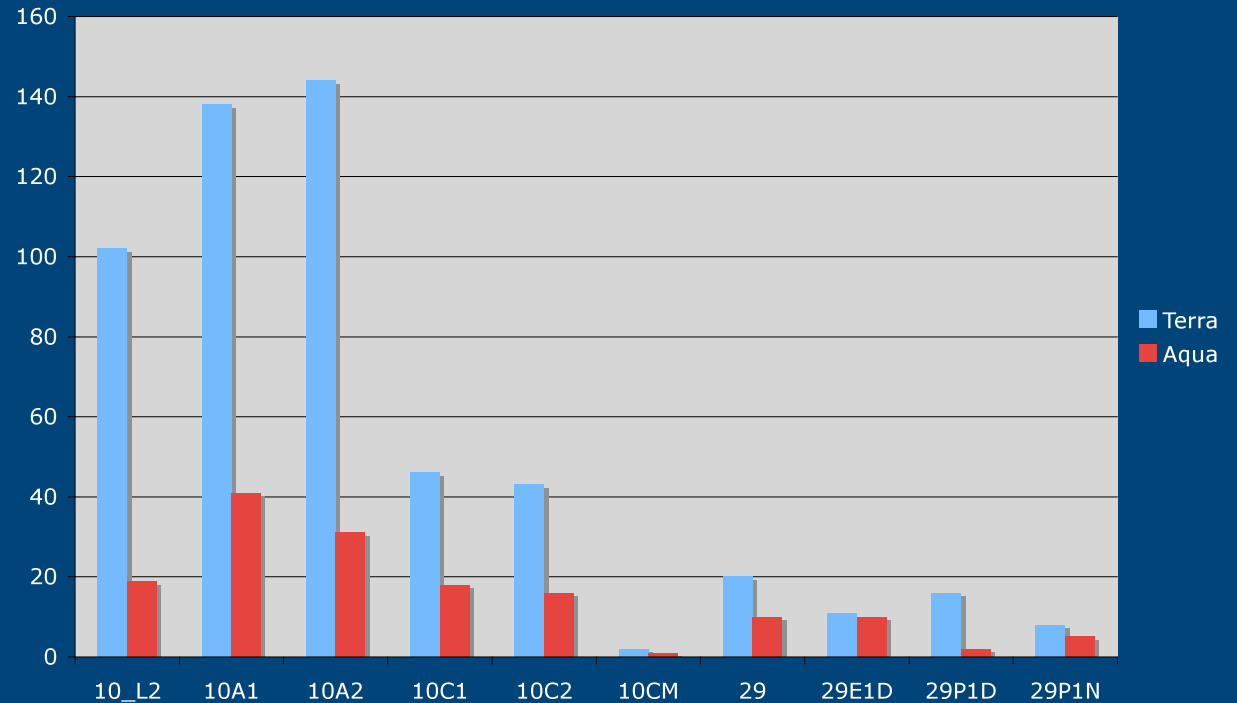
Metrics - Distinct MODIS Users

453 distinct MODIS users in 2007

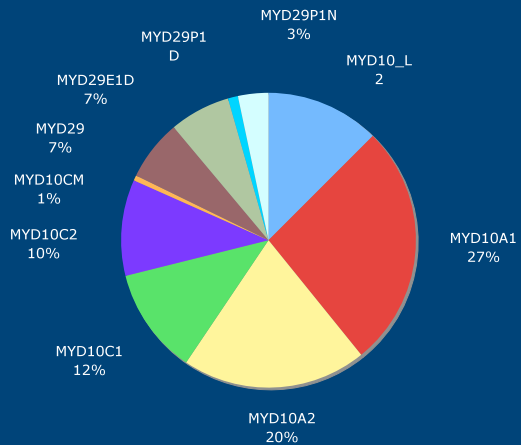
Terra Distinct Users (2007)



Distinct Users by Product

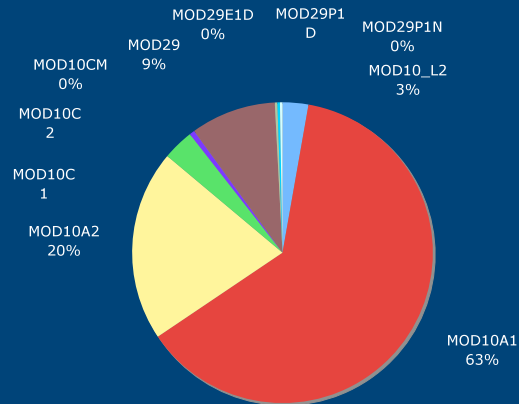


Aqua Distinct Users (2007)

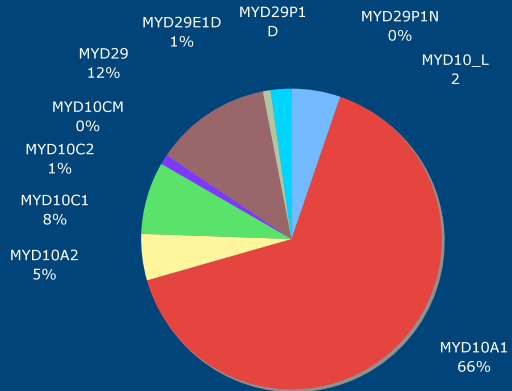


Metrics - Granules Ordered

Terra Products Ordered (2007)



Aqua Products Ordered (2007)



Granules	Ordered
Aqua	54,450
Terra	373,225
Combined	427,765

% of Archive Ordered in 2007

