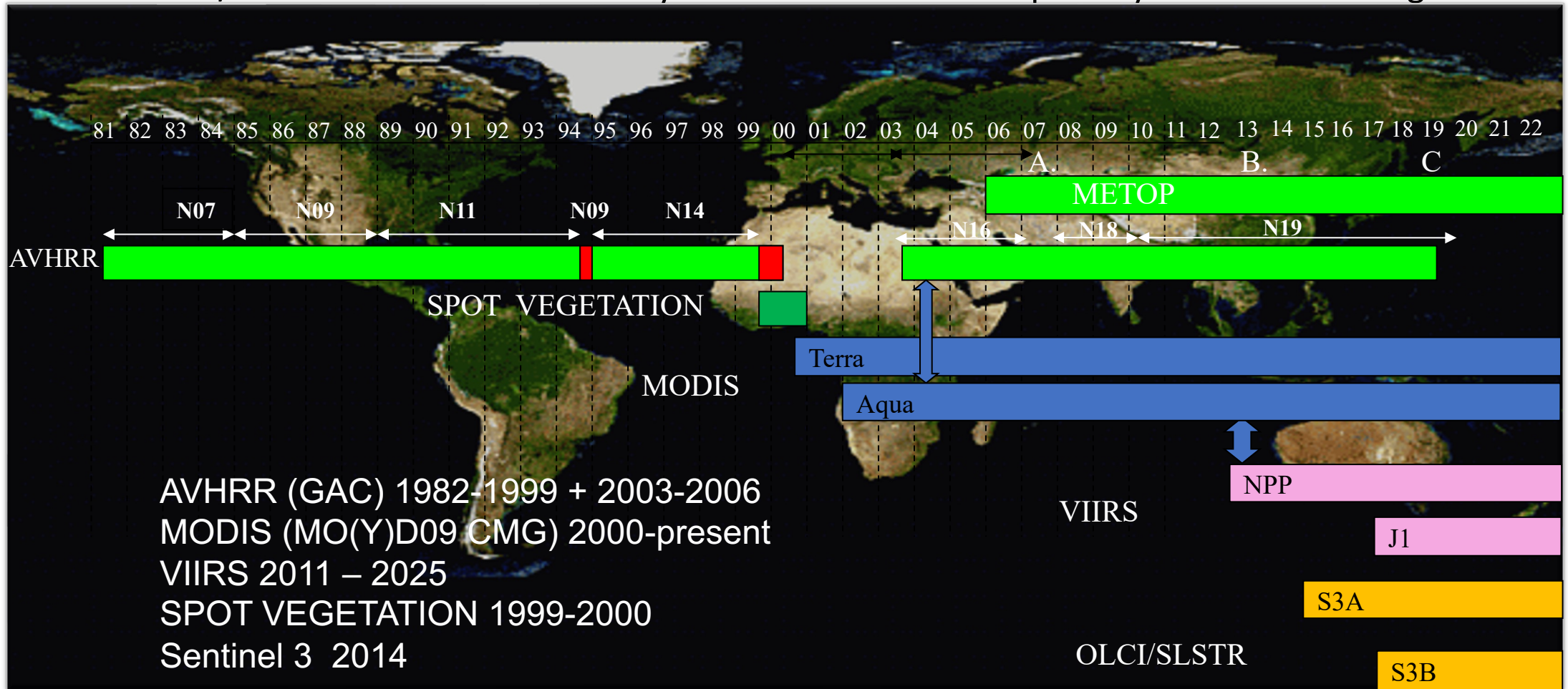


Land Climate Data Record

Multi instrument/Multi sensor Science Quality Data Records used to quantify trends and changes



<https://ltdr.modaps.eosdis.nasa.gov>

Emphasis on data consistency – characterization rather than degrading/smoothing the data

Beyond Terra MODIS...

Sentinel 3 Synergy (OLCI/SLSTR) 10:00am orbit

Covers MODIS spectral range including thermal (cloud screening)

Spatial resolution from 300m to 1km

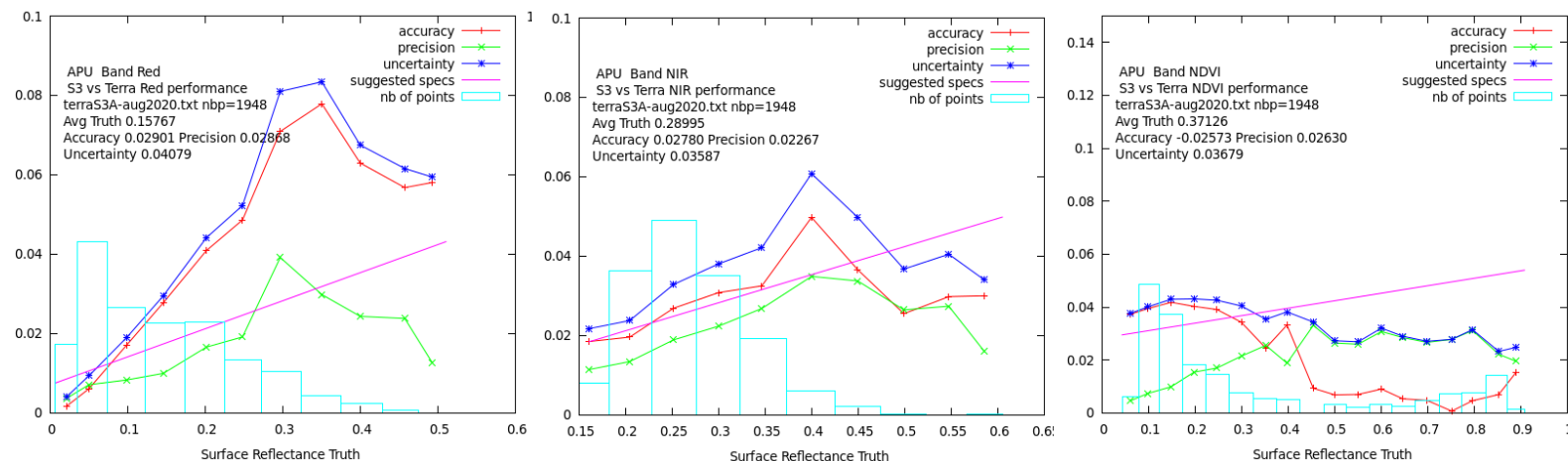
S3A (2016), S3B(2018), S3C,D (TBL), S3-NG (planned)

Level 1,2 archive in MODAPS

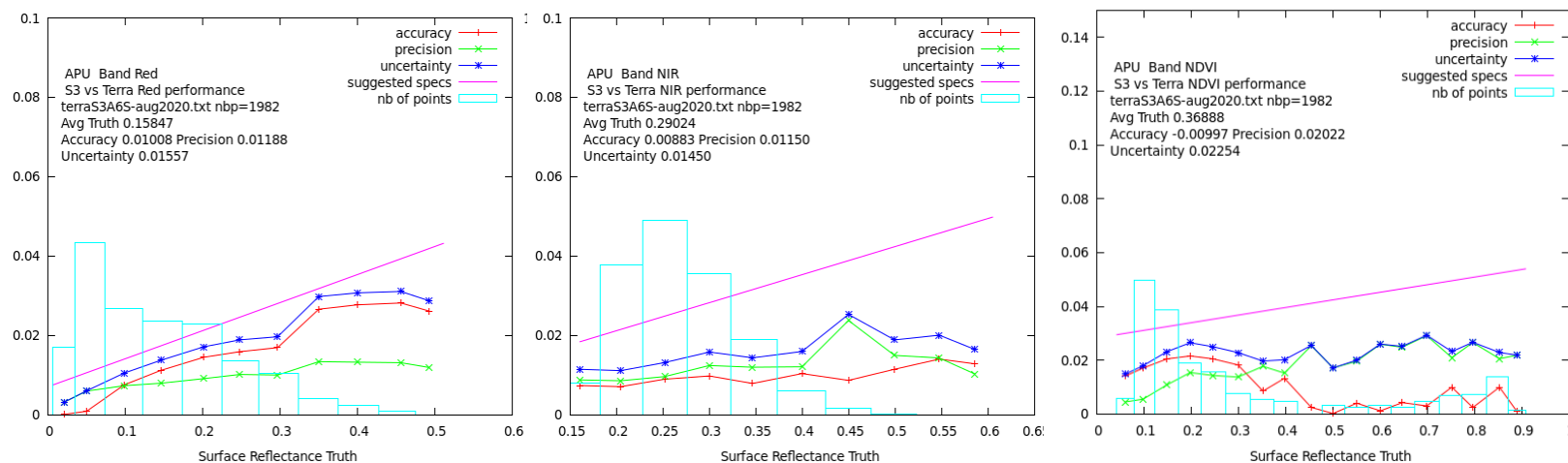
Status and Updates:

- Evaluation of L2 (surface reflectance) official ESA product shows room for improvement.
- Development of a simple LaSRC prototype on the Level1 data shows promising results.
- ***We are part of the ESA Expert working group on S3-NG***

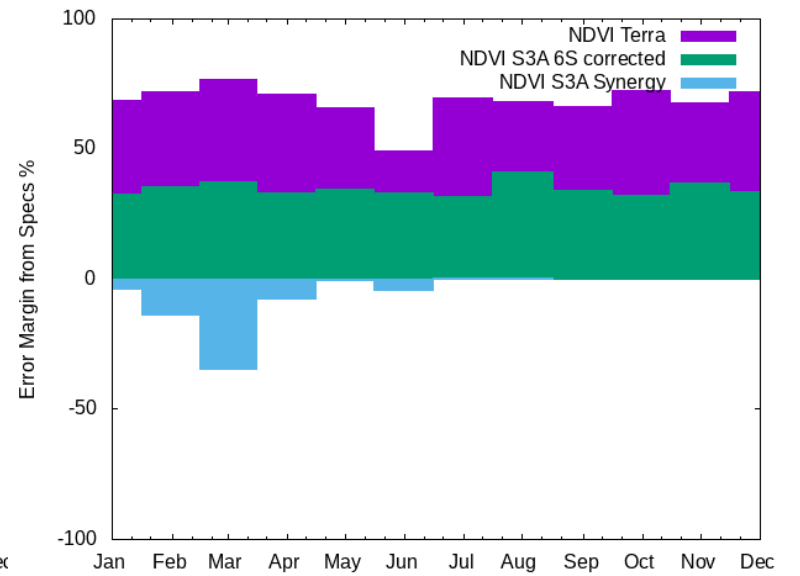
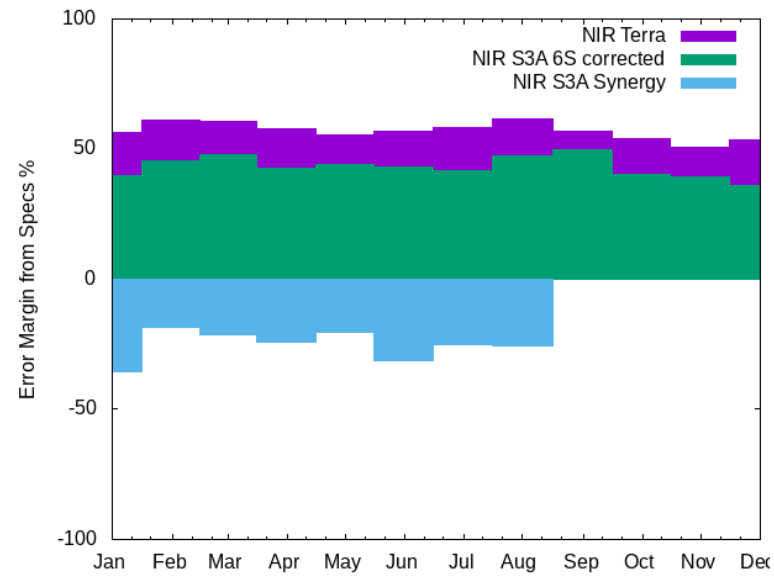
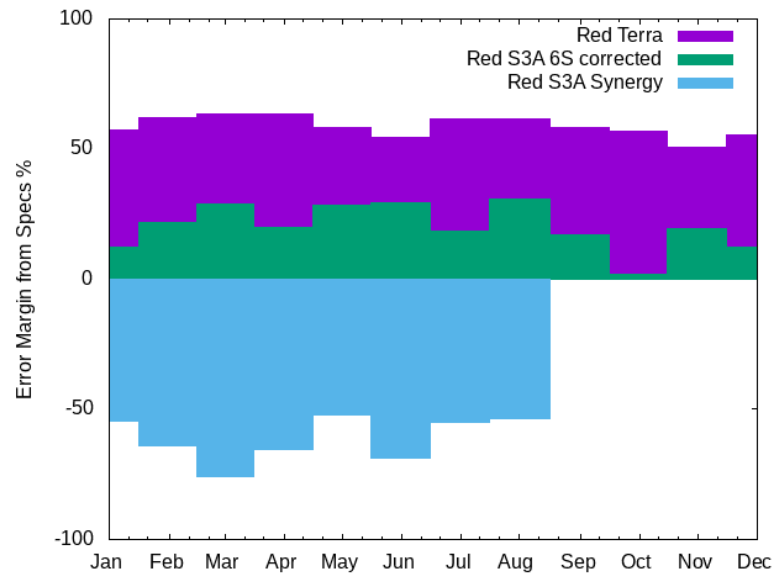
Sentinel 3 official ESA SR versus Terra (APU) Aug 2020



Sentinel 3 prototype LaSRC style SR versus Terra (APU) Aug 2020



Summary performances for 2020 (Uncertainty)



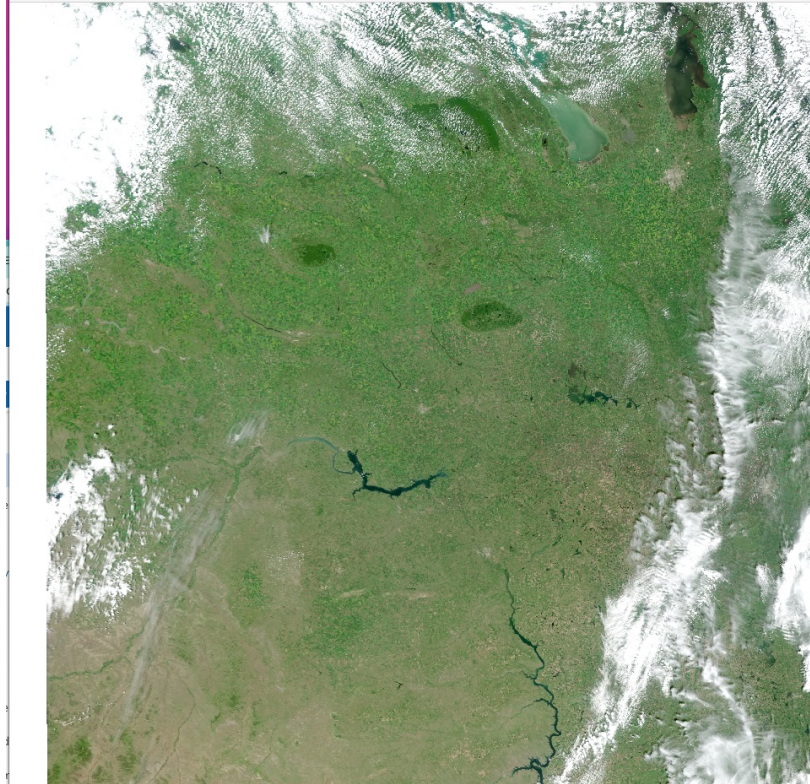
Sentinel 3 Corrected Reflectance (CREFL) Update (E. Vermote)

- **Two PGE's, CREFL-O (OLCI), CREFL-S (SLSTR) (L1 inputs netcdf)**

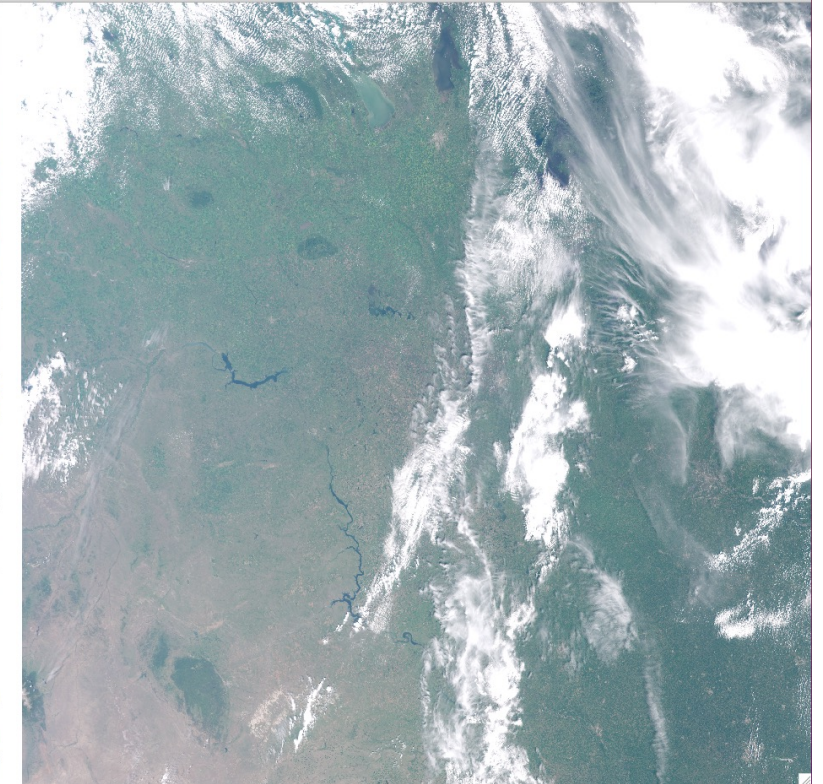
- CREFL-O (300m bands R,G,B NIR), completed

- CREFL-S (500m bands, R,G,NIR SWIR1 (1.6mic), SWIR2 (2.1mic)

Delivered in testing



Corrected reflectance's (OLCI)
RGB



Top of the atmosphere reflectance's (OLCI)
RGB

Sentinel 3 Surface Reflectance (SSREFL) development is starting